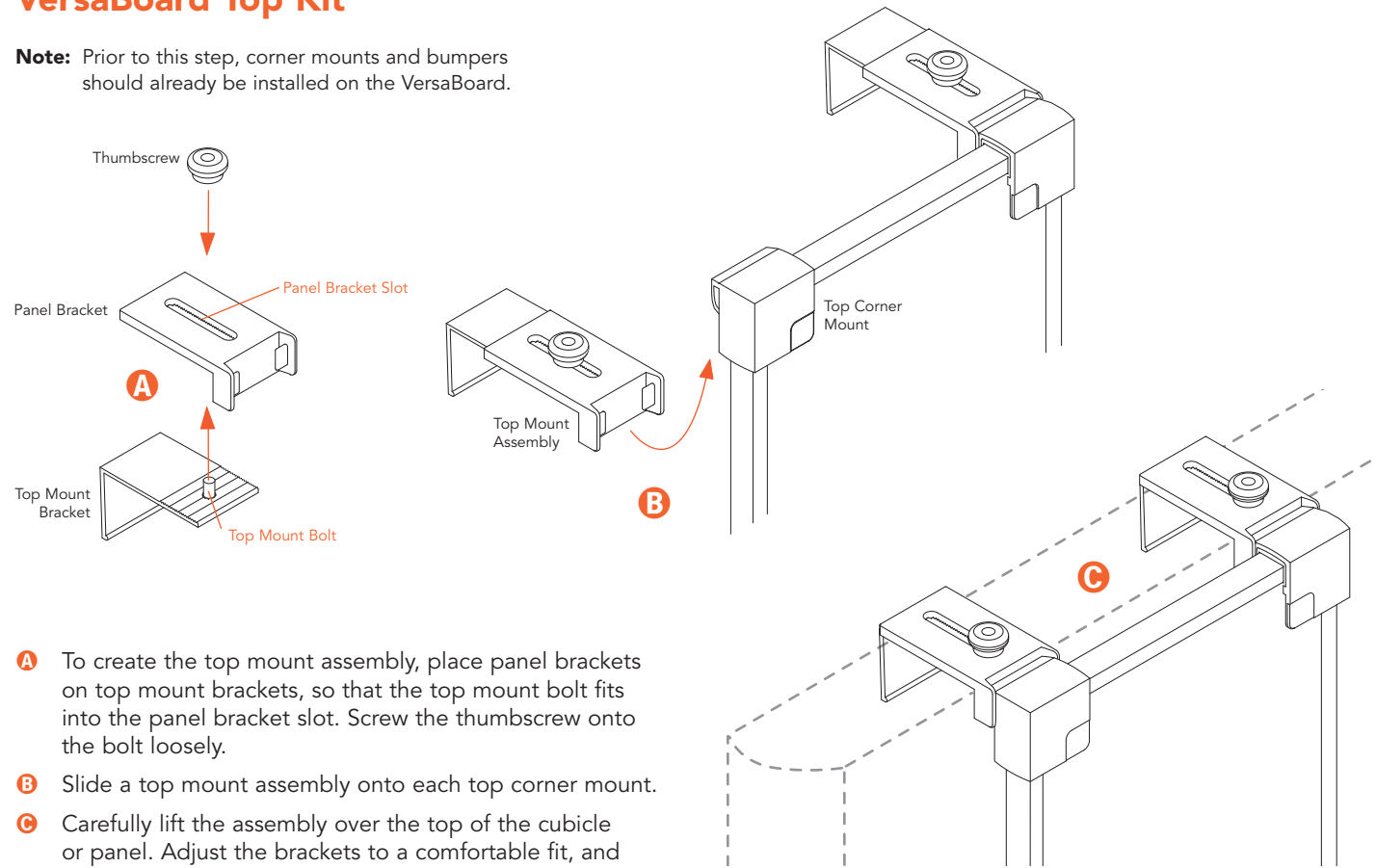


VersaBoard Top Kit

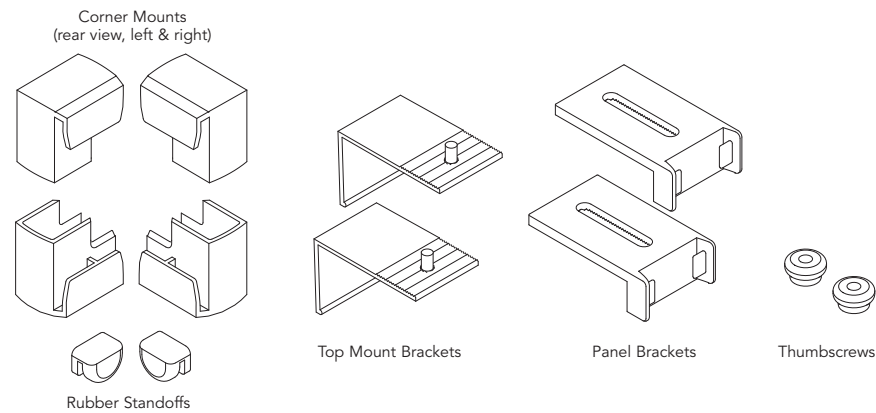
Note: Prior to this step, corner mounts and bumpers should already be installed on the VersaBoard.



- A** To create the top mount assembly, place panel brackets on top mount brackets, so that the top mount bolt fits into the panel bracket slot. Screw the thumbscrew onto the bolt loosely.
- B** Slide a top mount assembly onto each top corner mount.
- C** Carefully lift the assembly over the top of the cubicle or panel. Adjust the brackets to a comfortable fit, and gently tighten screws.

Each VersaBoard Top Kit includes:

- 2 Left Corner Mounts, 2 Right Corner Mounts
- 2 Rubber Standoffs, 2 Panel Brackets
- 2 Thumbscrews
- 2 Top Mount Brackets*

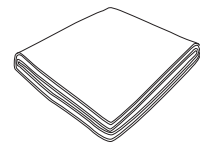


*Top Mount Brackets are available in 3 different sizes to accommodate from 2" up to 5-5/8" systems.

To order more markers, EganCloths, kits, or other accessories:



EganMarkers
Red, green, black, brown
By the dozen: all one color, or 3 of each



EganCloth™
Fabulous 16" x 12" washable cloth
great for any whiteboard

1-800-263-2387
www.egan.com

Egan Visual Inc.
1-800-263-2387

International
+1-905-851-2826

email: support@egan.com
www.egan.com

EGAN

5-YEAR LIMITED WARRANTY

Egan warrants the construction and components of its VersaBoard products for normal and reasonable use for a period of five years from the date of invoice. The Egan VersaBoard is backed by quality construction, including a honeycomb core lamination and a low-glare (EVS™) writing surface. The EVS writing surface has a 5-year limited warranty, provided that proper care and maintenance have been maintained. The use of harsh cleaners, permanent markers, paint, low quality dry-erase markers, and other abuse, may damage the surface and may void any warranty. The EganCloth® is recommended as the best product to use to clean the EVS surface.

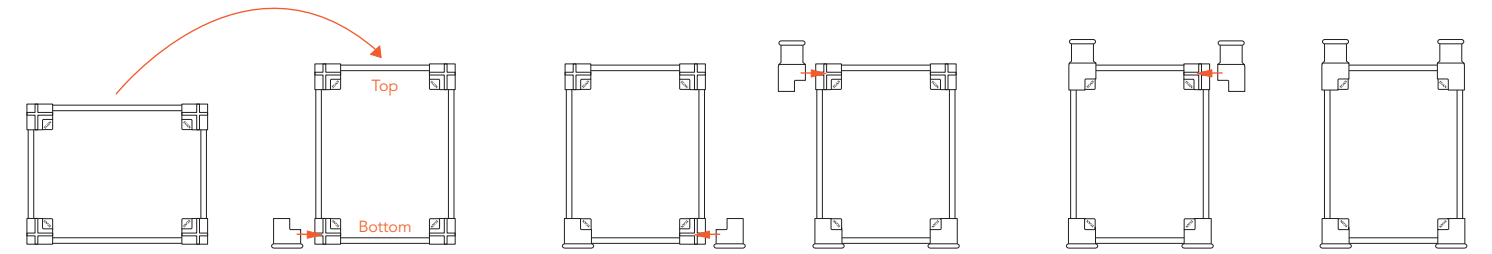
This warranty does not apply to defects resulting from negligence, damage from sharp objects, lack of proper care and maintenance. All decisions of workmanship, failure, misuse, and abuse remain with the manufacturer. Items may only be returned with prepaid shipping, and with Egan Visual Inc.'s prior written consent.

VersaBoard Brackets: Brackets supplied are intended for use to support the two specified sizes of VersaBoards in a typical office application. They are not intended or guaranteed for use with any other Egan Visual products.

No warranties other than those contained herein shall be applied.

#024H500_r4 01/05:50 © 2005 Egan Visual Inc. Printed in Canada. All Rights Reserved. Specifications are subject to change without notice. This document is available online at www.egan.com/docs/024H500_r5.pdf

VERSABOARD MOUNTING KIT INSTRUCTIONS

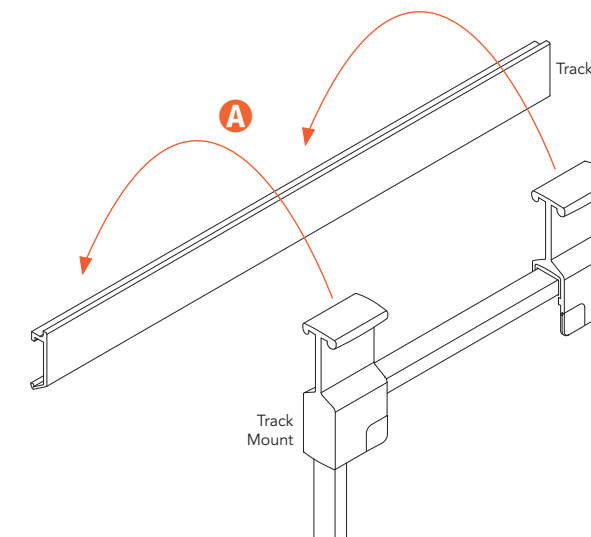


Corner Mount Assembly for Track Kits. Attach the track corner mounts and track corner bumpers, as shown above, before mounting.

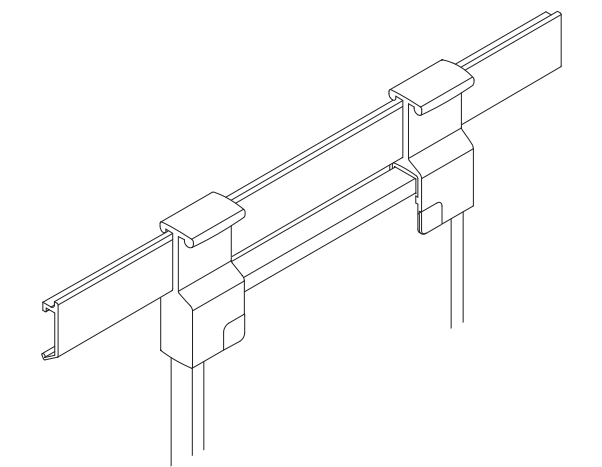
Any way you look at it, easy-to-use mounting kits are the secret to Egan VersaBoard versatility.

VersaBoard Track Kit

Note: Prior to this step, track mounts and track bumpers should already be installed on the VersaBoard.



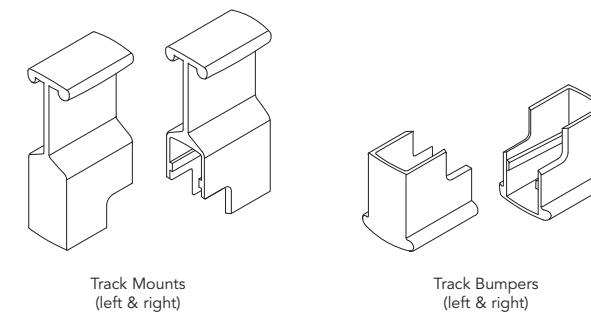
A With the corner track mounts and track bumpers installed, place the VersaBoard onto the track.



Track not included.
For track installation, refer to your Track Assembly Instructions.

Each VersaBoard Track Kit includes:

- 2 Track Mounts, 2 Track Bumpers
(Track not included)

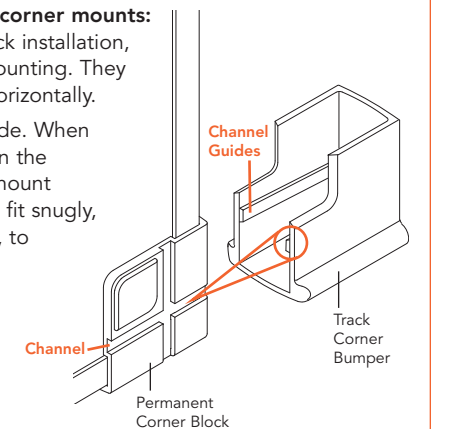


HOW TO INSTALL CORNER MOUNTS

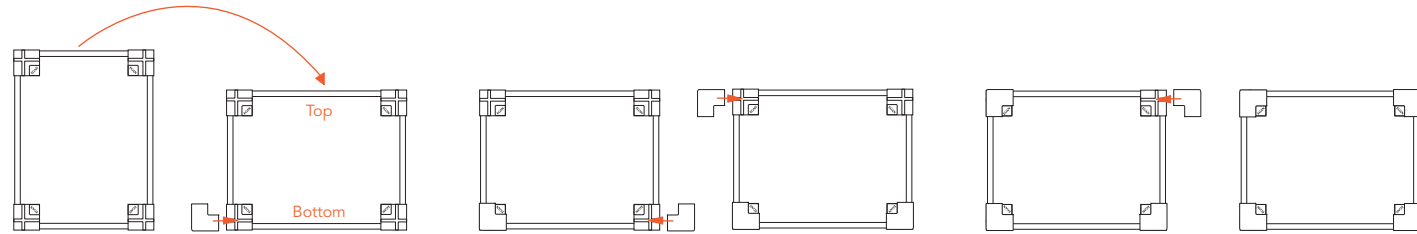
There are two types of VersaBoard corner mounts: **(A)** corner mounts & bumpers for Track installation, and **(B)** corners for Edge/Top/Wall mounting. They are always installed onto the board horizontally.

Each corner mount has a channel guide. When the guide lines up with the channel on the permanent corner block, the corner mount slides on easily. They are designed to fit snugly, so push until you feel the mount lock, to ensure it's firmly attached.

To remove, grip corner mount firmly and pull it away from the VersaBoard, horizontally. Wiggling the mount up and down as you pull will assist in removing the snug-fitting mounts.



VERSABOARD MOUNTING KIT INSTRUCTIONS

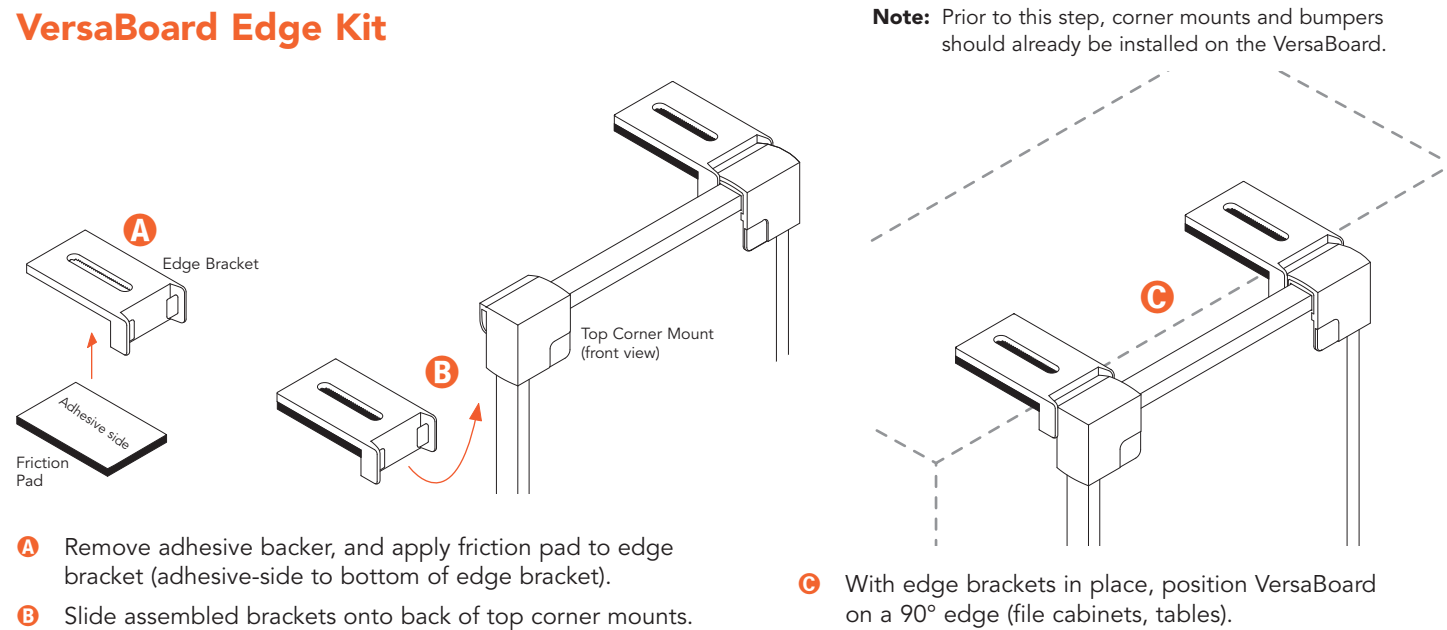


Corner Mount Assembly for Edge, Top & Wall Kits. Attach the corner mounts and bumpers, as shown above, before mounting.

VersaBoard corner mounts are designed to slide on easily – change from a vertical board to a horizontal board in a SNAP!

- Place the VersaBoard on a flat surface, or upright on the floor, in the orientation in which it will hang.
- Attach Rubber Standoffs to a left and right corner mount to create two bottom corner bumpers (see details below).
- Slide bottom bumpers onto board first, then top corner mounts, as shown above; refer to the appropriate kit mounting instructions.

VersaBoard Edge Kit



Note: Prior to this step, corner mounts and bumpers should already be installed on the VersaBoard.

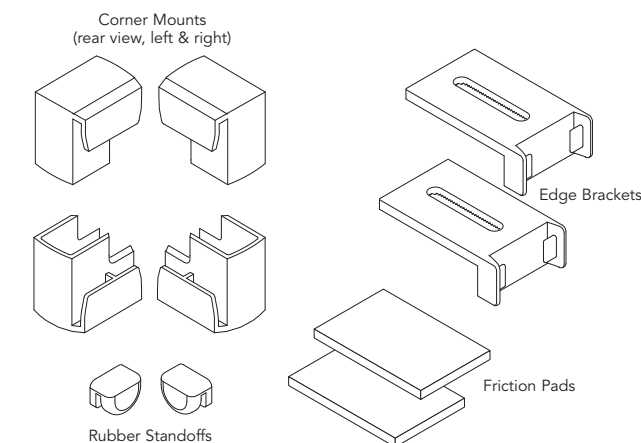
- Remove adhesive backer, and apply friction pad to edge bracket (adhesive-side to bottom of edge bracket).
- Slide assembled brackets onto back of top corner mounts.

C With edge brackets in place, position VersaBoard on a 90° edge (file cabinets, tables).

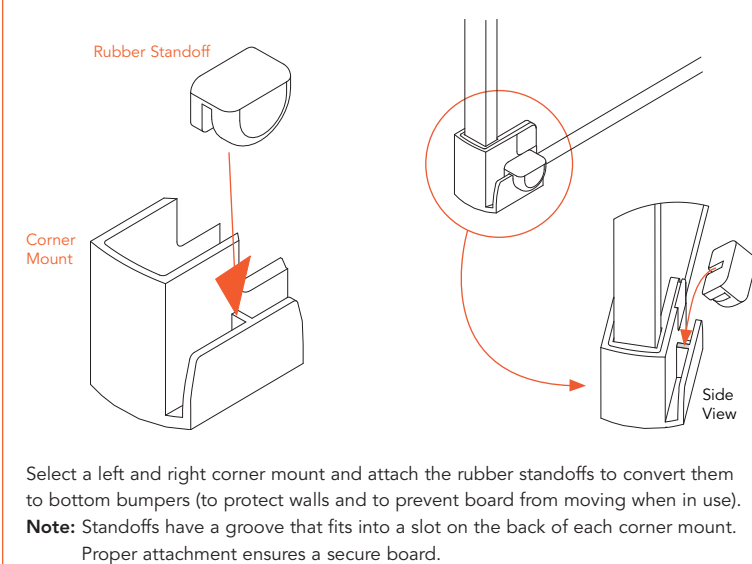
WARNING: This option is intended for use in areas that experience a minimum (to zero) walk-by traffic. If you anticipate traffic or movement, it is recommended that you use an adhesive such as double-sided tape or Velcro® to secure the Edge Mount Assembly to the resting surface.

Each VersaBoard Edge Kit includes:

- 2 Left Corner Mounts, 2 Right Corner Mounts
- 2 Rubber Standoffs, 2 Edge Brackets, 2 Friction Pads

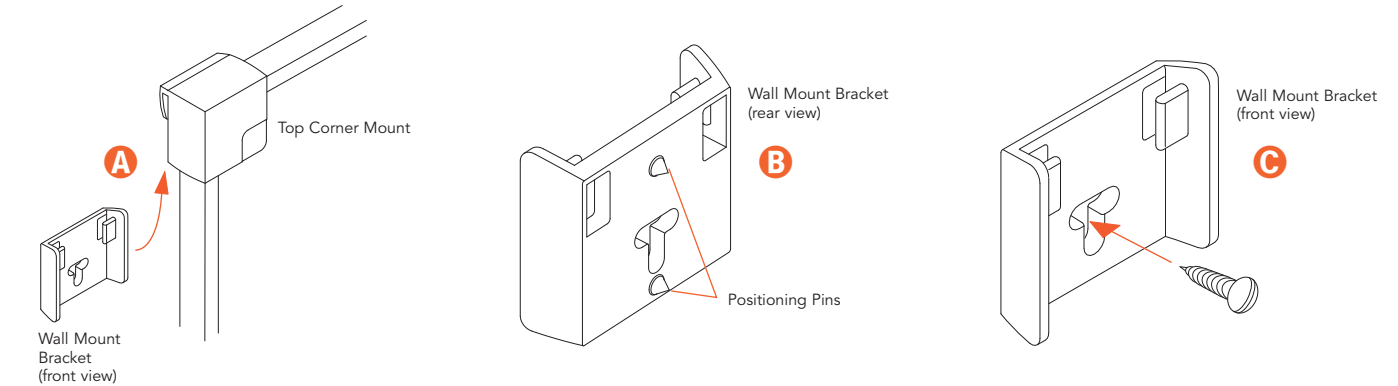


HOW TO BUILD A CORNER BUMPER



VersaBoard Wall Kit

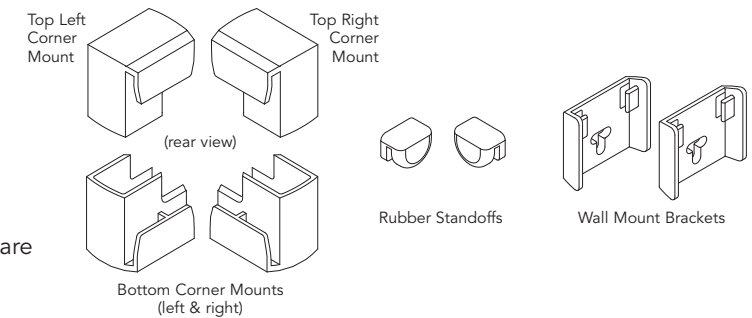
Note: Prior to this step, corner mounts and bumpers should already be installed on the VersaBoard.
Warning: Wall Mount is considered permanent, ensure that you have positioned the board accurately prior to installation. Installer to provide fastening hardware best suited to wall type and board weight.



- Slide the wall mount brackets onto the top corner mounts of the VersaBoard.
- Position board at desired location on wall, ensure it's level, and apply pressure firmly against top left and right corner mounts. The positioning pins on the back of each wall mount bracket will leave a dimpled impression on the wall. Remove the wall mount brackets from the corner mounts.
- Position each wall mount bracket so that the positioning pins rest in the impressions marked on the wall in Step B. Use a screw (#8 maximum) or suitable hardware to fasten each bracket to the wall.
- Slide the VersaBoard down onto the wall mount brackets.

Each VersaBoard Wall Kit includes:

- 2 Top Corner Mounts (left and right)
- 2 Bottom Corner Mounts (left and right)
- 2 Rubber Standoffs, 2 Wall Mount Brackets



What you'll need to have on hand:

- 2 Screws (maximum size: #8) or suitable fastening hardware
- Appropriate screwdriver and a level

