

EGAN

202 ADA LECTERN

S2LH SPEC SHEET

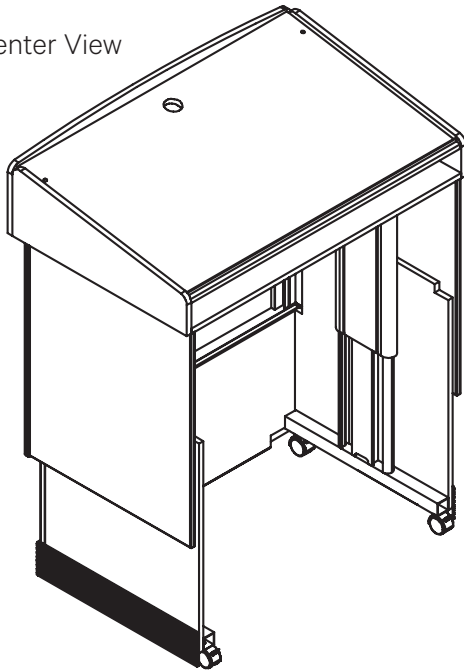


PRODUCT SPECIFICATIONS & FEATURES

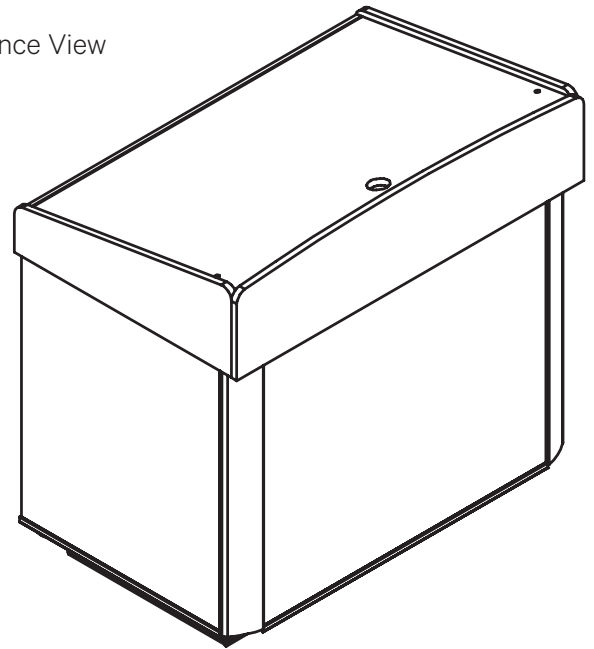
FEATURES

- Equipped with a push button and electric-lift mechanism that adjusts the working height from 34-44".
- Inside clearance accommodates wheelchair access and complies with universal design and the Americans with Disabilities Act.
- Wiring grommets for field setup of laptops, tablets and microphone.
- Crown Finish in Etex - 10 standard finish.
- Cabinet Frame: Clear Anodized Aluminum.
- Cabinet Body Finish: Etex or Wood Veneer.

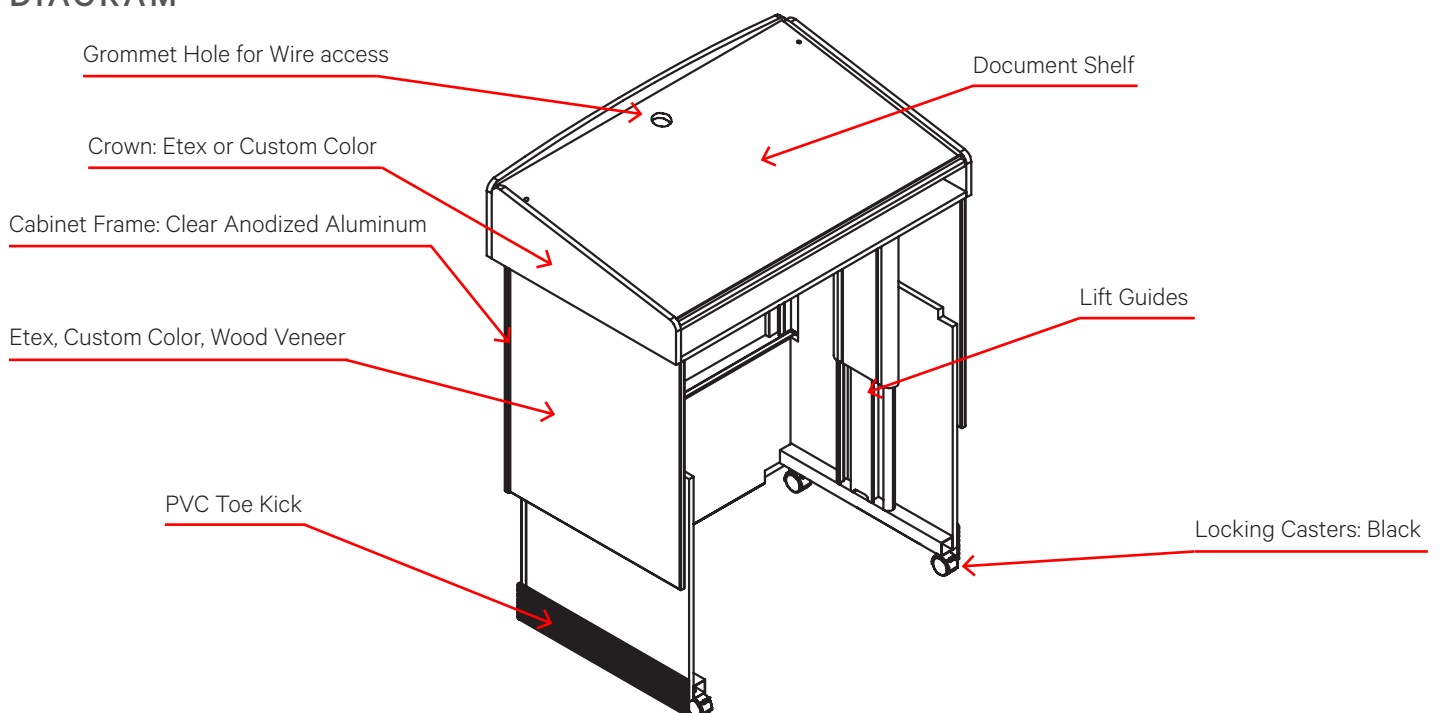
Shown: Presenter View



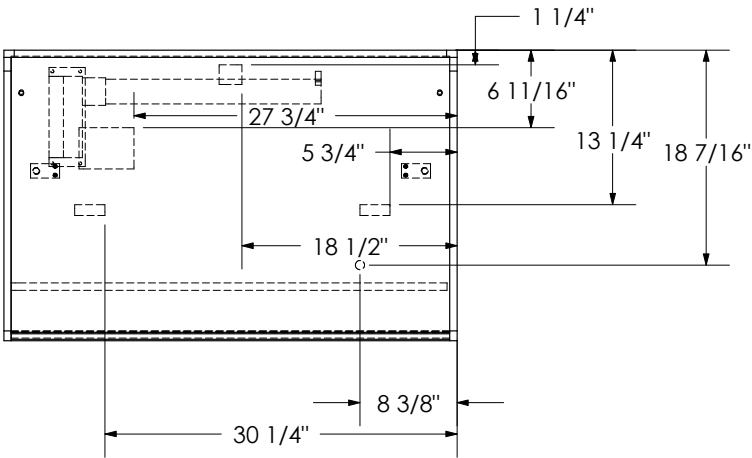
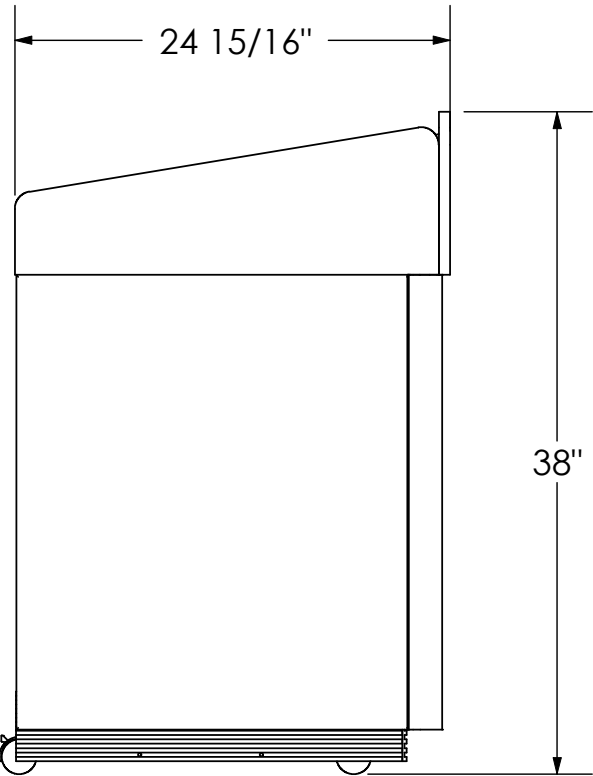
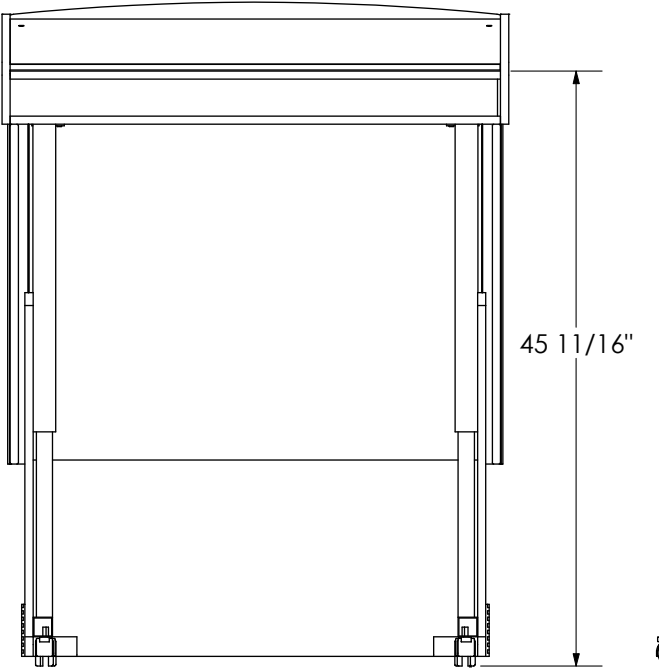
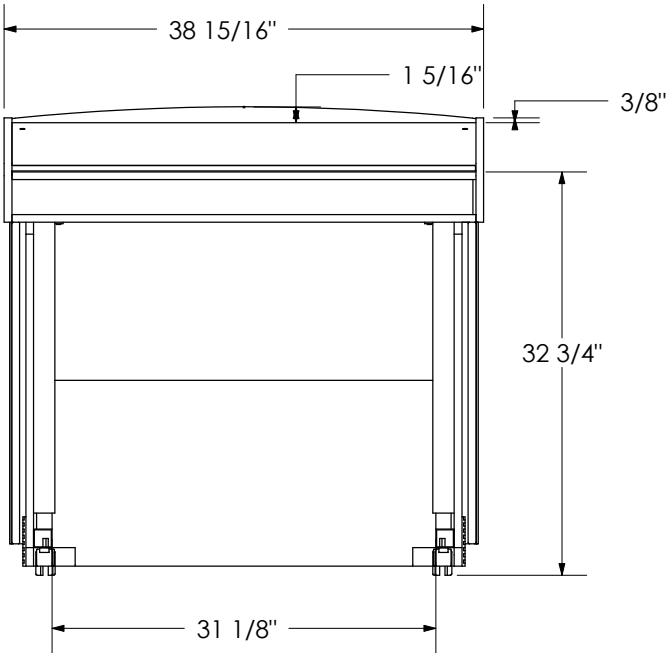
Shown: Audience View



DIAGRAM

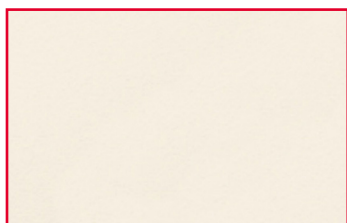


MEASUREMENTS

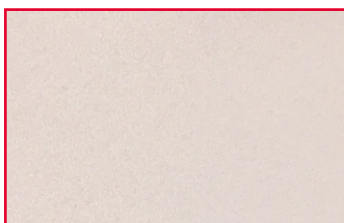


TOP VIEW

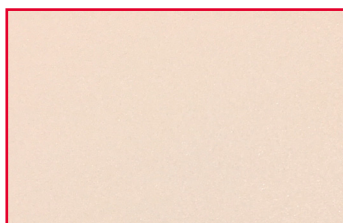
ETEX BODY & CROWN FINISH OPTIONS



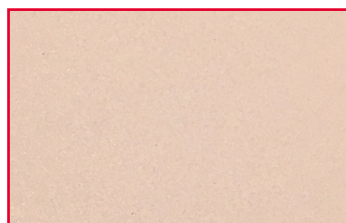
Taupe



Platinum



Putty



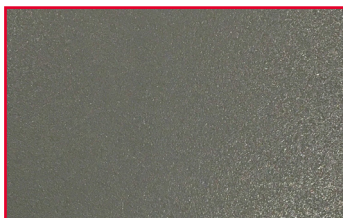
Sand



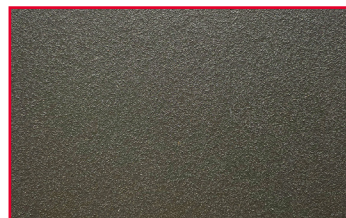
Gray



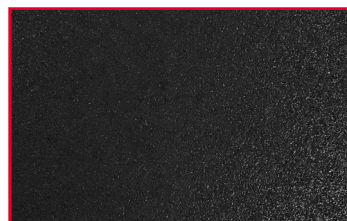
EganMetallic



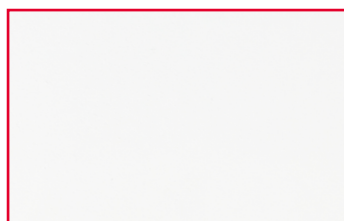
Charcoal



Slate



Black

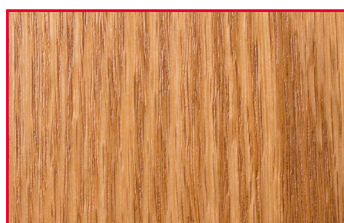


White

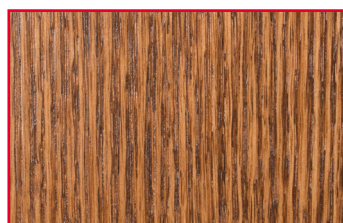
WOOD VENEER BODY FINISH OPTIONS



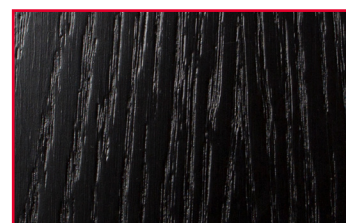
Light Oak



Medium Oak



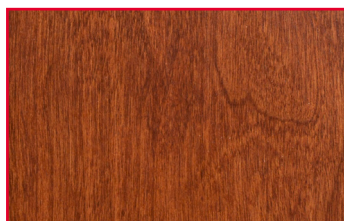
Dark Oak



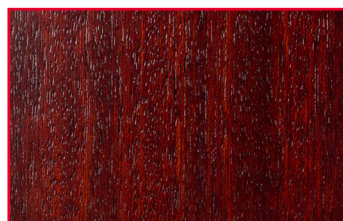
Black Oak



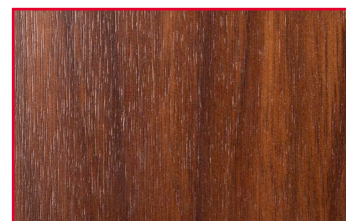
Maple



Cherry



Mahogany



Walnut

ACCESSORIES

- Light - 12" electric goose neck lamp complete with dimmer switch
- Clock - Liquid Crystal Display clock with front control buttons. The clock is flush-mounted in the top right corner of the crown support. Battery included.



BUILT TO INSPIRE

We facilitate creativity, promote the sharing and capturing of ideas while seamlessly and beautifully complementing the existing workspace. We inspire the minds today, that will inspire the future. We are the blank canvas that gives life to the beginning of an idea

We offer a wide range of well-designed, productivity enhancing products that can be configured and sourced as either self-standing or integrated for a systematic solution that enhance and complement the people, the assets within the work space and provide a blank canvas for ideas to spark.