

EGAN

DIMENSION CURVE

DMR SPEC SHEET



PRODUCT SPECIFICATIONS & FEATURES

FEATURES



EganINK compatible - Custom graphics/ artwork



Custom Sizes available upon request



Egan Versa Surface - Professional Grade Surface



Instant Ship



Ideal for projection - 160 viewing angle



Magnet compatible

DIMENSIONS & WEIGHT

PRODUCT SIZE	INSTALLED	PRODUCT WEIGHT (LBS)	SHIPPING SIZE	SHIPPING WEIGHT (LBS)
48"w x 36"h x 1"d	1.25"d	28	65"w x 53"h x 2"d	38
48"w x 48"h x 1"d	1.25"d	38	58"w x 53"h x 2"d	51
60"w x 48"h x 1"d	1.25"d	47	65"w x 53"h x 2"d	63
72"w x 48"h x 1"d	1.25"d	56	77"w x 53"h x 2"d	75
96"w x 48"h x 1"d	1.25"d	75	102"w x 53"h x 2"d	100
120"w x 48"h x 1"d	1.25"d	113	125"w x 53"h x 2"d	144

Assembled depth of 1.25" depth. Dimension thickness is 1".



Dimension Curve
1" Corner Depth

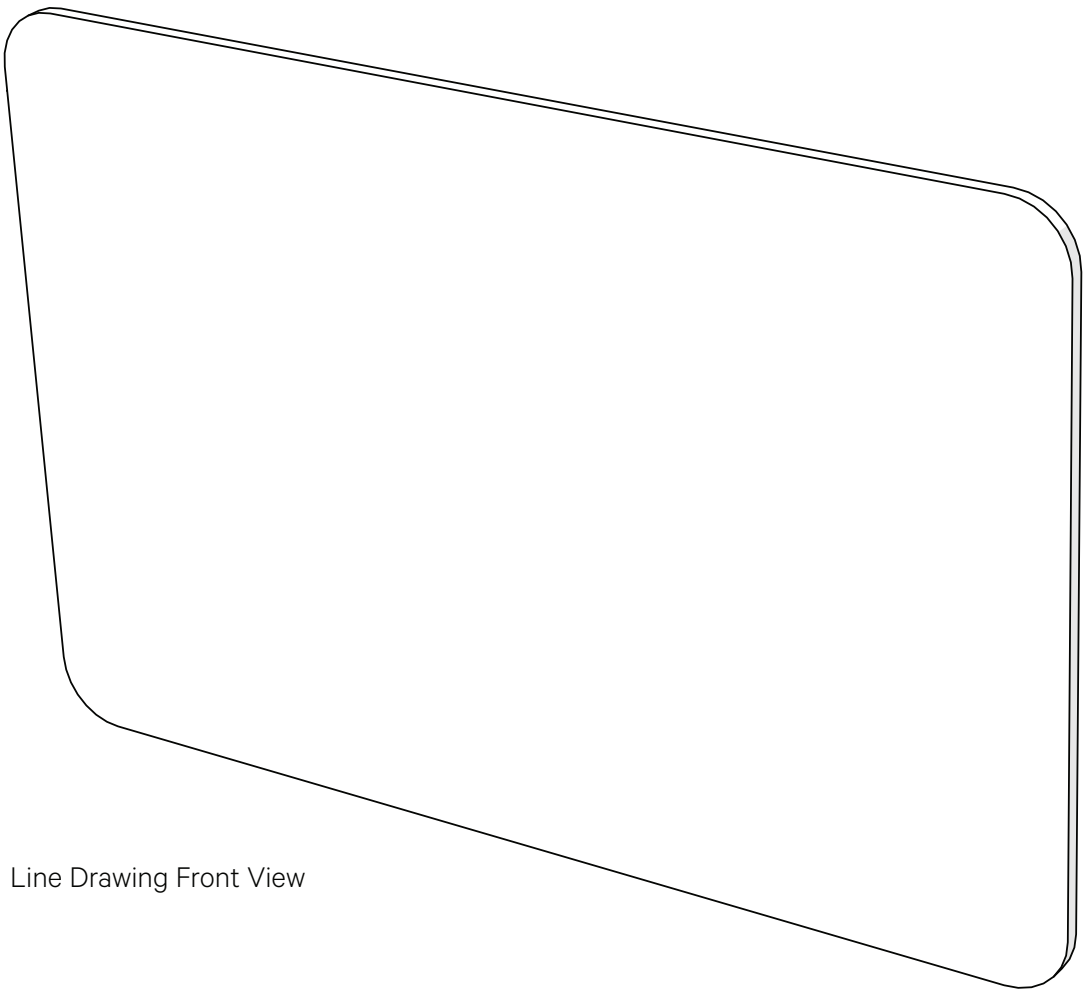
BOARD HEIGHT & WIDTH

	48 x 48	60 x 48	72 x 48	96 x 48	120 x 48
48 x 36					

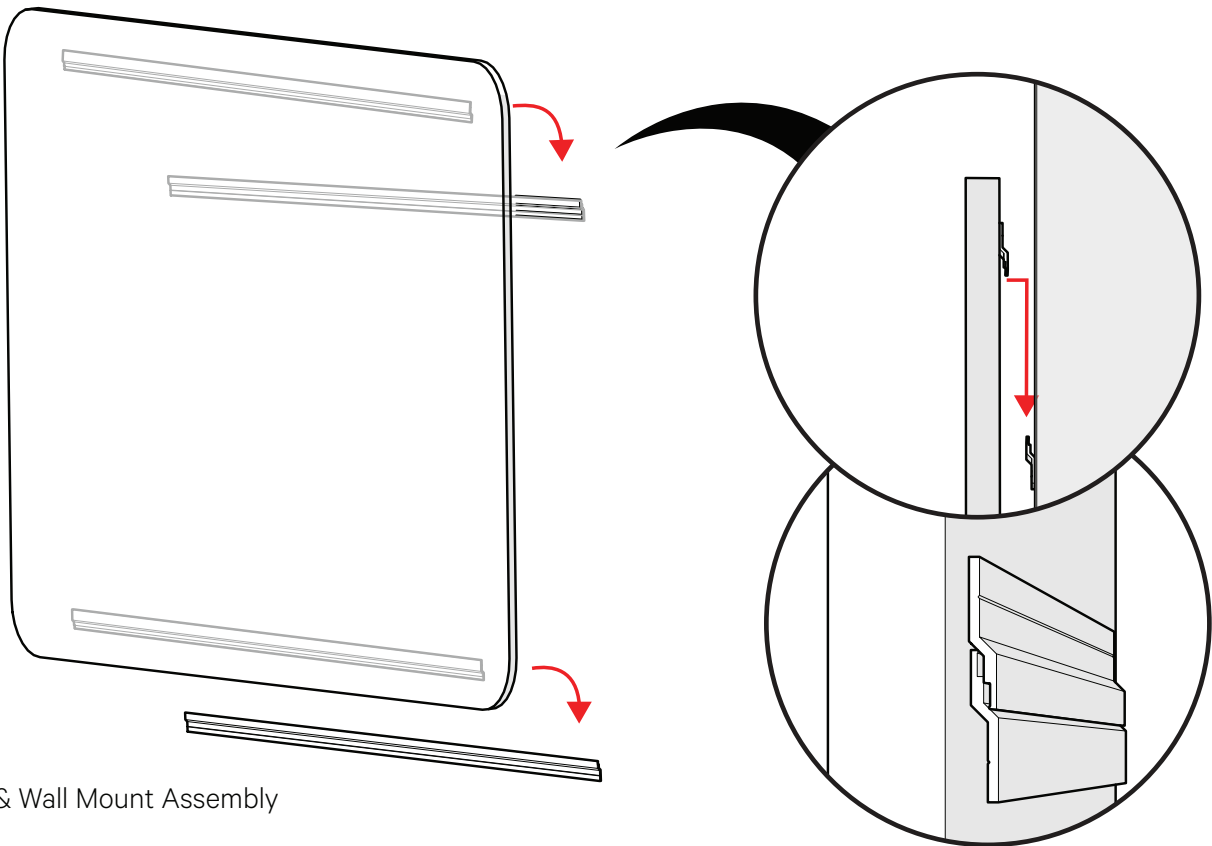
PRODUCT PHOTOS



BOARD PROFILE



Line Drawing Front View



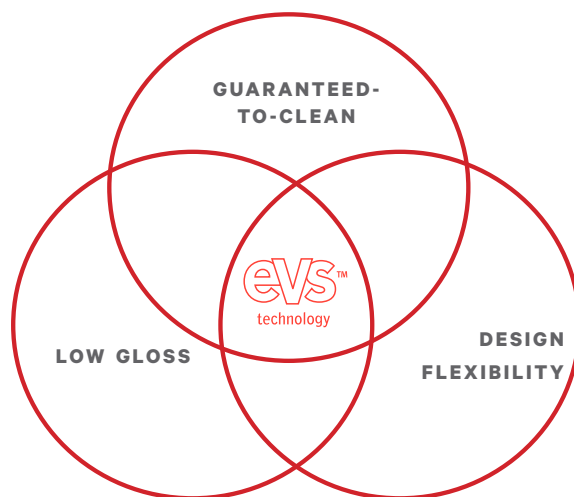
Cleat & Wall Mount Assembly

EVS SURFACE

DESCRIPTION

Egan Versa Surface is a professional grade, proprietary surface. It is the only surface in the market to deliver against the three components, which make for a superior dry-erase surface.

1. Flexible Design: Specify EVS in a wide array of formats and shapes, and can cover a large expanse up to 400ft.
2. Guaranteed-to-Clean: Unlike Porcelain, EVS can handle tough environments, and can even remove permanent marker, which is why we provide a 10-year warranty on all EVS products.
3. Low Gloss: The soft, white matte surface reduces glare and reflection from ambient light making it ideal for projection.



WARRANTY INFORMATION

All Egan Visual products carry a warranty term of five (5) years from the date of purchase unless otherwise stated here:

- EVS® Presentation Surfaces “Guaranteed-to-Clean:” 10 years
- EganINK (ASTM F793 10a Category I Wallcovering): 1 year

ENVIRONMENTAL INFO

- Mindful Materials
- PW Precautionary List
- Red List Complaint
- meets LEEDv4
- Pre-Consumer
- Post-Consumer
- GreenGuard Gold Certificates



BUILT TO INSPIRE

We facilitate creativity, promote the sharing and capturing of ideas while seamlessly and beautifully complementing the existing workspace. We inspire the minds today, that will inspire the future. We are the blank canvas that gives life to the beginning of an idea

We offer a wide range of well-designed, productivity enhancing products that can be configured and sourced as either self-standing or integrated for a systematic solution that enhance and complement the people, the assets within the work space and provide a blank canvas for ideas to spark.