

EGAN


DIMENSION INTEGRAL

DMI SPEC SHEET




PRODUCT SPECIFICATIONS & FEATURES


FEATURES




EganINK compatible - Custom graphics/ artwork



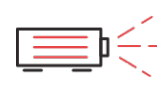
GreenGuard Gold Certified




Professional Grade Surface



Custom Sizes available upon request



Ideal for projection - 160 viewing angle



Magnet compatible

DIMENSIONS & WEIGHT

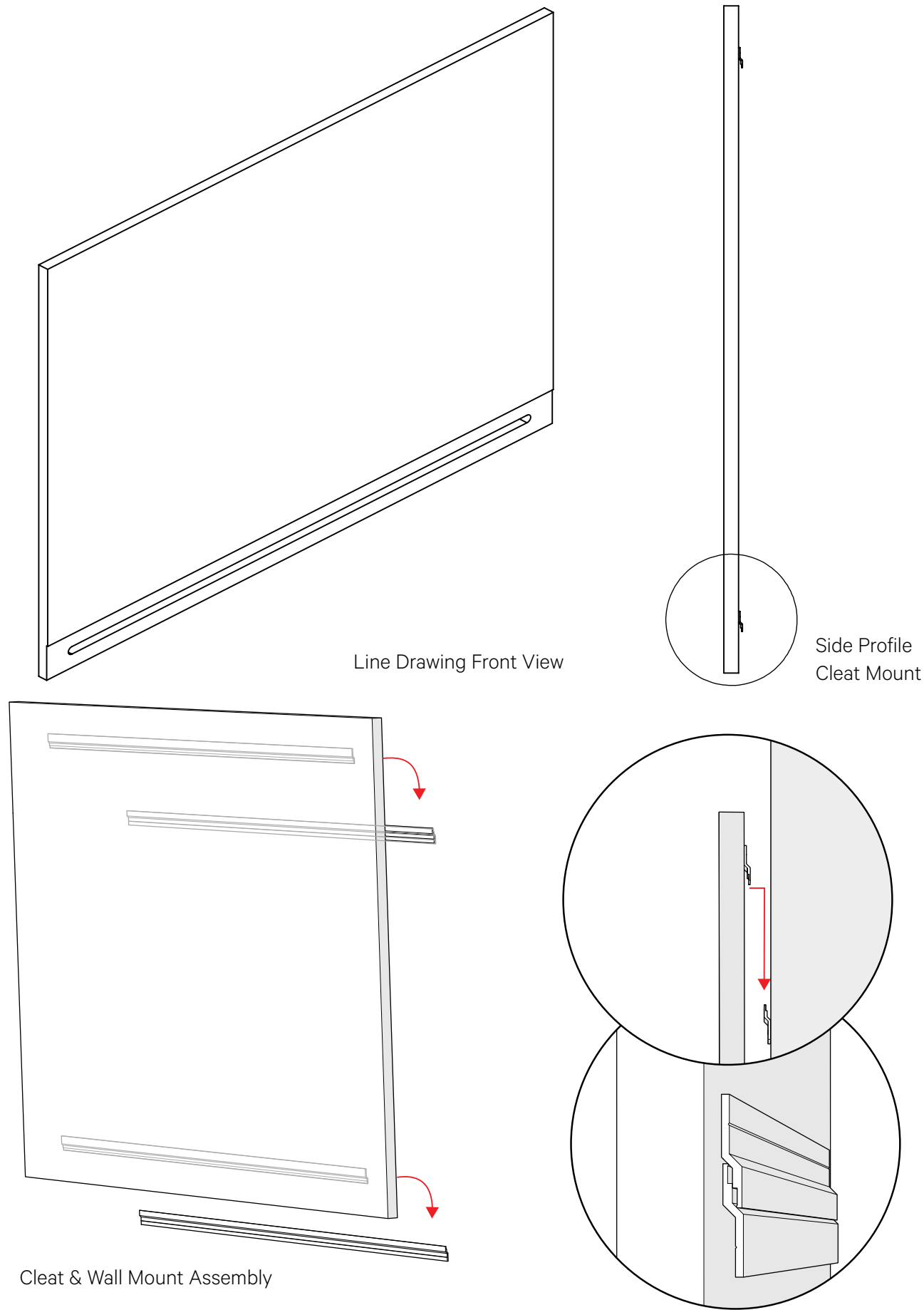
PRODUCT SIZE	PRODUCT WEIGHT (LBS)	SHIPPING SIZE	SHIPPING WEIGHT (LBS)
48”w x 36”h x 1.25”d	34	41”w x 53”h x 2”d	44
48”w x 48”h x 1.25”d	45	53”w x 53”h x 2”d	58
60”w x 48”h x 1.25”d	57	65”w x 53”h x 2”d	73
72”w x 48”h x 1.25”d	68	77”w x 53”h x 2”d	87
96”w x 48”h x 1.25”d	91	102”w x 53”h x 2”d	116
120”w x 48”h x 1.25”d	113	125”w x 53”h x 2”d	144

PRODUCT PHOTOS



BOARD HEIGHT & WIDTH

48 x 48	60 x 48	72 x 48	96 x 48	120 x 48
48 x 36				

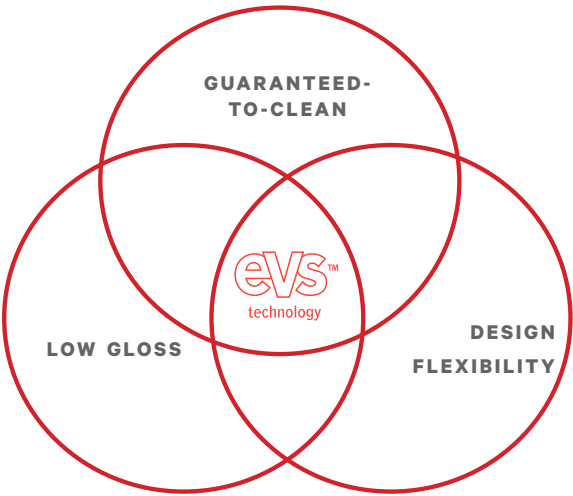


EVS SURFACE

DESCRIPTION

Egan Versa Surface is a professional grade, proprietary surface. It is the only surface in the market to deliver against the three components, which make for a superior dry-erase surface.

- 1. Flexible Design: Specify EVS in a wide array of formats and shapes, and can cover a large expanse up to 400ft.
- 2. Guaranteed-to-Clean: Unlike Porcelain, EVS can handle tough environments, and can even remove permanent marker, which is why we provide a 10-year warranty on all EVS products.
- 3. Low Gloss: The soft, white matte surface reduces glare and reflection from ambient light making it ideal for projection.



ENVIRONMENTAL INFO

- [Mindful Materials](#)
- PW Precautionary List
- Red List Complaint
- meets LEEDv4
- Pre-Consumer
- Post-Consumer
- [GreenGuard Gold Certificates](#)

WARRANTY INFORMATION

All Egan Visual products carry a warranty term of five (5) years from the date of purchase unless otherwise stated here:

- EVS® Presentation Surfaces "Guaranteed-to-Clean:" 10 years
- EganINK (ASTM F793 10a Category I Wallcovering): 1 year



BUILT TO INSPIRE

We facilitate creativity, promote the sharing and capturing of ideas while seamlessly and beautifully complementing the existing workspace. We inspire the minds today, that will inspire the future. We are the blank canvas that gives life to the beginning of an idea

We offer a wide range of well-designed, productivity enhancing products that can be configured and sourced as either self-standing or integrated for a systematic solution that enhance and complement the people, the assets within the work space and provide a blank canvas for ideas to spark.