

EGAN

CURVE



DIMENSION CURVE

MINIMALIST DESIGN

Featuring all the benefits of the Dimension line, Dimension Curve is built with 4” rounded corners for a softer, smoother design.

The Dimension design family is known for its sleek, minimalist look, and is characterized by a frameless design wrapped in Egan’s unique propriety dry-erase surface: EVS. EVS is a professional grade surface that delivers against key components: guaranteed-to-clean even the toughest of stains, low gloss and glare making it projection compatible, 160-degree viewing angle, and a smooth, matte finish for a tactilely stimulating writing surface.

Dimension Curve delivers on key features:

- 4” radius rounded corner
- Frameless
- Cleat mounted
- EVS dry-erase surface
- Smooth matte, tactile writing surface
- Guaranteed-to-clean
- Ideal for projection
- 1” depth
- Magnet compatible
- EganINK compatible
- Custom sizes
- Link configurations option



Dimension Curve | 96”w x 48”h

DIMENSION BOARDS

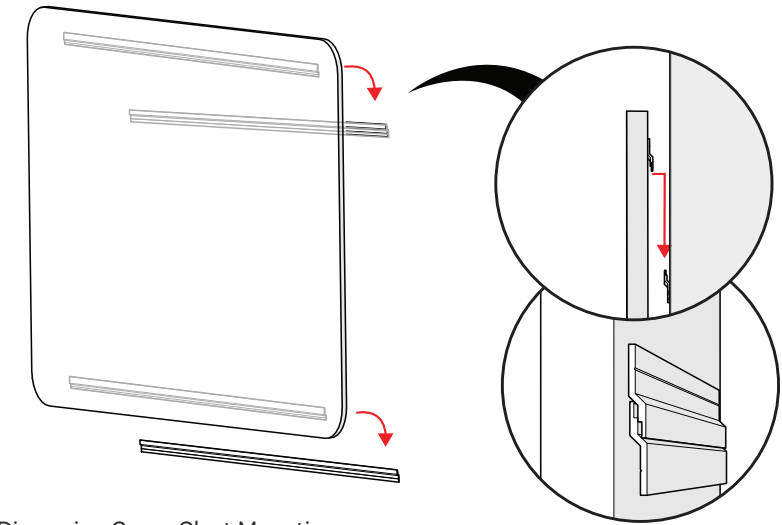


SIZE OPTIONS

48 x 48	60 x 48	72 x 48	96 x 48	120 x 48
48 x 36				

* Custom sizes available upon request

MOUNTING



Dimension Curve Cleat Mounting

ROUNDED CORNER



GLASSWRITE CURVE

THE BEST IN GLASS

GlassWrite Curve markerboard is defined by its 4" rounded corners for a softer, smoother design. GlassWrite Curve features all the benefits of the GlassWrite design family.

Egan GlassWrite is built from a guaranteed-to-clean, crystal clear, low iron tempered safety glass for high clarity of surface and edges. A frameless 1/4" (5 mm) thick glass dry erase board, GlassWrite boards are finished with polished edges and are available in color, as neo-magnet compatible, and with high-resolution printing: EganINK.

GlassWrite Curve is installed as cleat mount, and can be specified as stand alone or as GlassWrite LINXX. GlassWrite Curve delivers on key features,

- 4" radius rounded corner
- Framless
- Pantone colors
- Custom color
- EganINK
- Custom size
- Linked configuration
- Neo-magnet compatible
- Guaranteed-to-clean
- Cleat mounted



GLASSWRITE CURVE

GLASS OPTIONS

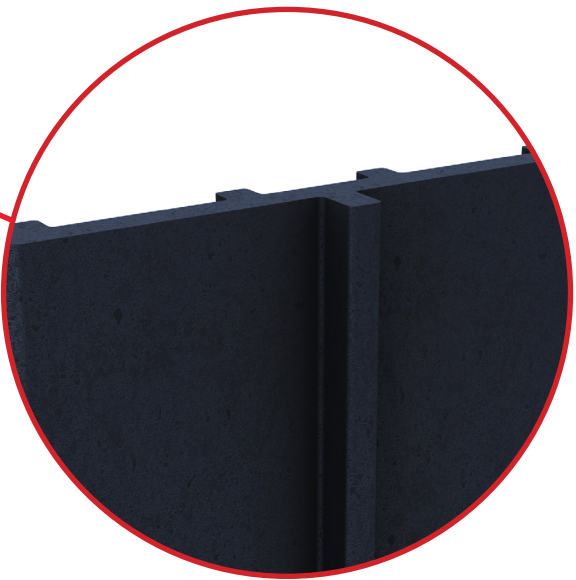


*Specify any Pantone color for your glass boards. Clear and frosted also available.

SIZE OPTIONS

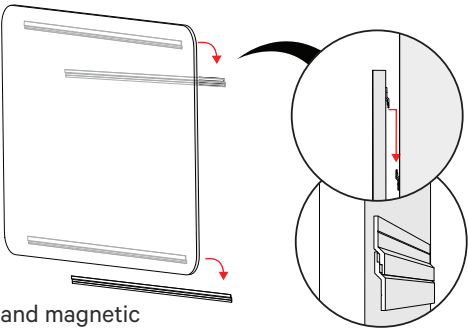
48 x 48	60 x 48	72 x 48	96 x 48	120 x 48
48 x 36				

* Custom sizes available upon request



LINXX Connection
Select a combination of GlassWrite boards to create your infinite length run using a vertical ABS black plastic extrusion.

MOUNTING OPTION



Cleat Mounted
*only available for color and magnetic

ROUNDED CORNER



FABRIC CURVE

TEXTILE DESIGN

Uniquely Egan, the Fabric Curve Tackboard features 4" rounded corners and a frameless design. The fabric is tightly wrapped around the edges of the frame with no folds or creases guaranteeing the most clean and seamless design.

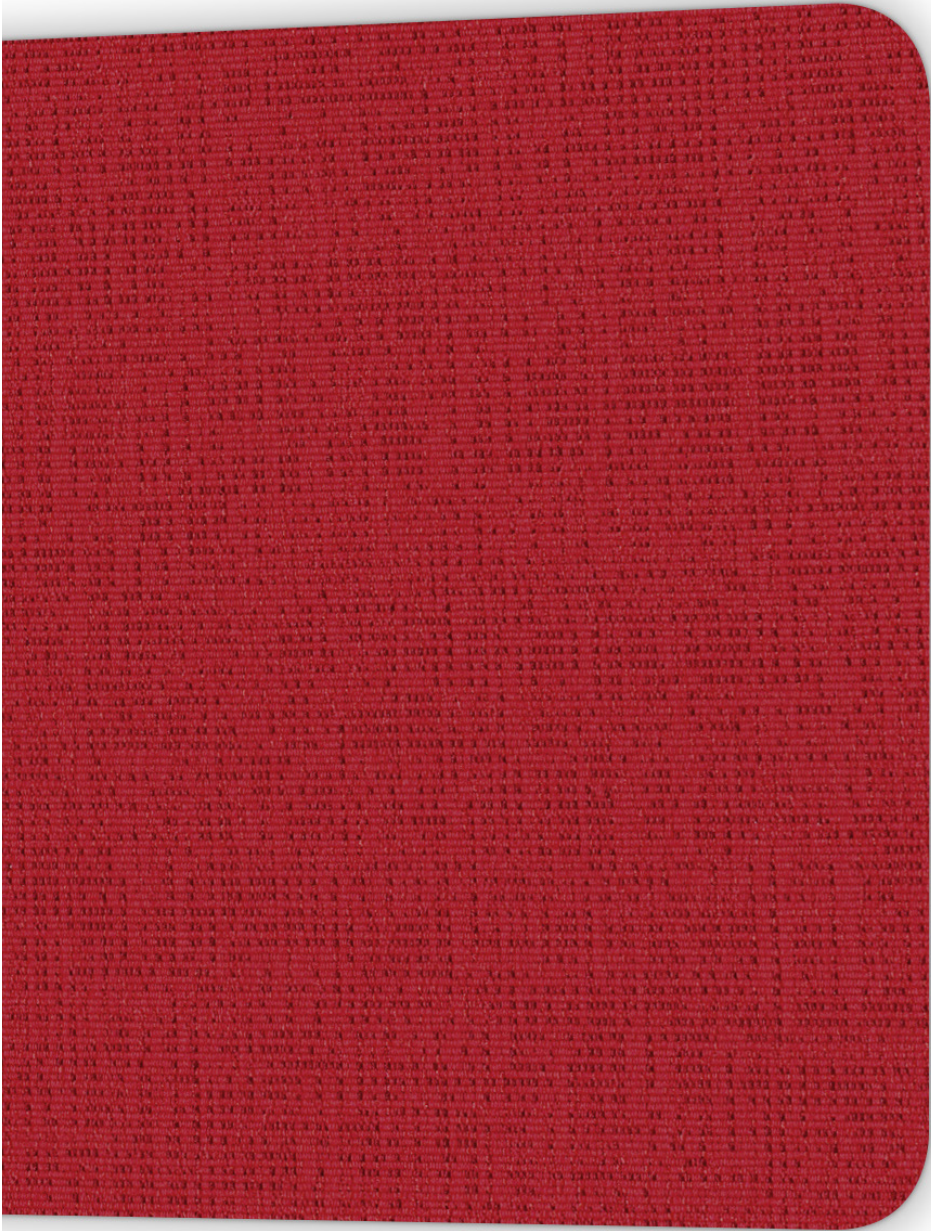
Under the Egan Fabric Program, select from a library of thousands of tackable fabric options. Ranging from vibrant colors to soft earth tones, the Egan Fabric Program makes it easy to find a tackable fabric suited to your design aesthetic.

Fabric Curve Tackboard delivers on key features:

- 4" radius rounded corner
- Frameless
- Cleat mounted
- Tested and approved Guildford of Maine fabrics
- Tested and approved Maharam fabrics
- Customer's Own Material (COM)
- 1" depth
- Custom sizes



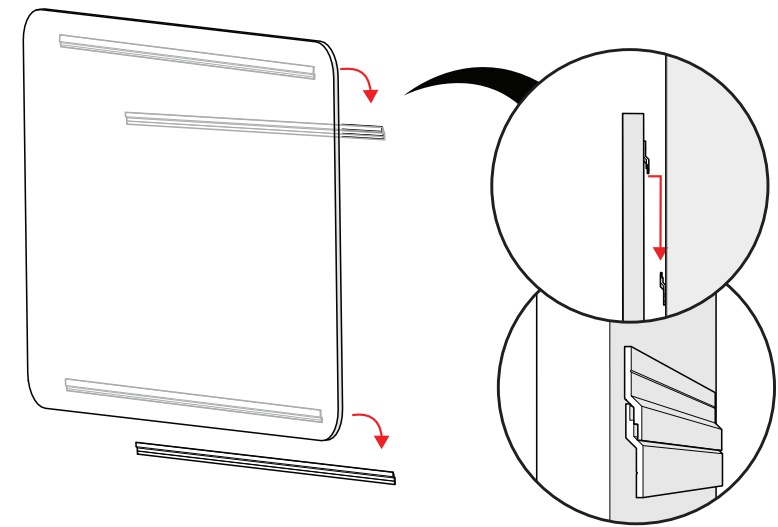
FABRIC BOARDS



SIZE OPTIONS

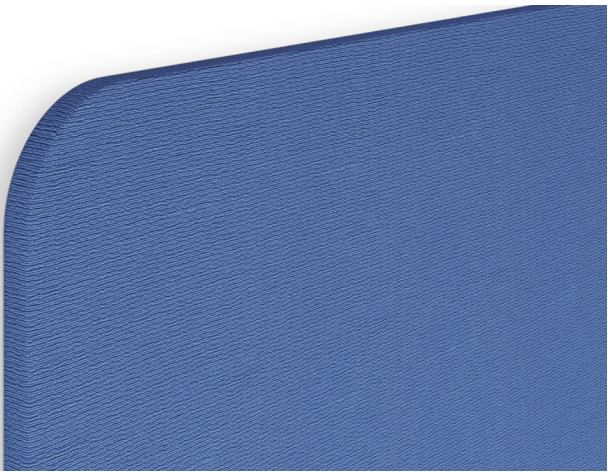
82x51					
48 x 48	60 x 48	72 x 48	77 x 48		96 x 48
48 x 36					

MOUNTING



Fabric Curve Cleat Mounting

ROUNDED CORNER





We facilitate creativity, promote the sharing and capturing of ideas while seamlessly and beautifully complementing the existing workspace. We inspire the minds today, that will inspire the future. We are the blank canvas that gives life to the beginning of an idea.

We offer a wide range of well-designed, productivity enhanceing products that can be configured and sourced as either self-standing or integrated for a systematic solution that enhance and complement the people, the assets within the work space and provide a blank canvas for ideas to spark.