

# EGAN DIMENSION





# DIMENSION

## MINIMALIST DESIGN

A sleek, minimalist look, the Dimension design family is characterized by a frameless board wrapped in Egan's unique propriety dry erase surface: EVS. EVS is a professional grade surface that delivers against four components: guaranteed-to-clean even the toughest of stains, low gloss and glare for a 160-degree viewing and projection compatible surface, flexible design to cover large expanses (up to 400ft), and matte finish, which is tactilely stimulating and pleasing for the eyes.

Design features are distinguished by its vanishing edge, a frameless surface with clean, crisp lines for a simple and modern design. Suitable for every professional environment, Dimension products come in presentation board and TableScreen format. Dimension comes in a selection of standard sizes, or may be specified as a custom size.

Key Features:

- Frameless
- Cleat Mounted
- EVS dry-erase surface
- Smooth matte, tactile writing surface
- Guaranteed-to-clean
- Ideal for projection
- 1" & 1/2" depths
- Sharp, square edges
- Magnet compatible
- EganINK compatible
- Custom Sizes
- Link configurations option



Dimension Stele LINXX | 1" deep | 48"w x 96"h





**D I M E N S I O N   S T E L E**

Designed with the concept of free flow thinking, its clean aesthetic “vanishing edge” keeps the mind unencumbered. Complementary to any design or environment, Dimension Stele can be specified in either 1” or ½” profiles. Unlike porcelain boards, Dimension frameless design does not chip and has a continuous, clean-cut appearance. Its smooth, matte surface makes for an enjoyable, effortless and tactile writing experience.

**DIMENSION STRATUS**

Dimension Stratus is a visually stunning presentation canvas unlike any other. The outside edges of Dimension Stratus are chamfered back towards the wall in a 15-degree angle, which results in the board’s unique floating appearance. The knife-edge design also gives the board a clean, modern and minimalist look in line with Dimension design principals. Dimension Stratus features the award winning, proprietary EVS surface.







**D I M E N S I O N   L I N X X**

Broaden your collaboration surface by linking Dimension boards together to create a large, seamless presentation wall. Dimension Stele LINXX can be aligned vertically, or linked in an offset configuration. Combine boards of varying heights to create a massive, professional presentation surface for a clean canvas and vanishing-edge appearance. Dimension LINXX can be specified with Dimension Stele or Stratus.



D I M E N S I O N   I N T E G R A L

The Dimension Integral sets a new standard for design and practical performance. The clean, beautiful design of Dimension is constructed with a built-in marker tray. The marker tray is a seamless ¾” groove integrated into the width of the board - a fashion that is true to the minimalist design principles. Rather than protruding from the edges, the tray remains aligned to the surface of the board keeping the clean, flush appearance of Dimension.







**D I M E N S I O N 13**

Dimension 13 offers a low profile with a sleek 13mm or ½” depth, providing for a modern clean aesthetic. Featuring all the benefits of the sleek, high functioning, minimalist Dimension line: guaranteed-to clean, projection compatible, and magnet compatible. Suitable for every professional environment, Dimension comes in a selection of standard sizes, or may be specified as a custom size.



**D I M E N S I O N   H O V E R**

Dimension Hover is the alternative to the glassboard. A 5mm thick whiteboard, Dimension Hover is constructed with Egan’s proprietary EVS surface. In addition to Dimension Hover’s better performance value, it is a significantly more affordable alternative to glass. When considering glass, consider Dimension Hover.



Dimension Hover | 48”w x 48”h





DIMENSION SLIDER

The Dimension Slider is a high-performance whiteboard wall. Built from wall mounted, linked boards and comes with a sliding mechanism designed to allow hanging boards to slide smoothly over the face of the wall mounted boards. As the name suggests, Dimension Slider is built using all Dimension boards, which are frameless whiteboards constructed with Egan's proprietary EVS surface. EVS is a matte finish surface that is guaranteed-to-clean, projection compatible, magnetic.



# DIMENSION BOARDS

## BOARD OPTIONS



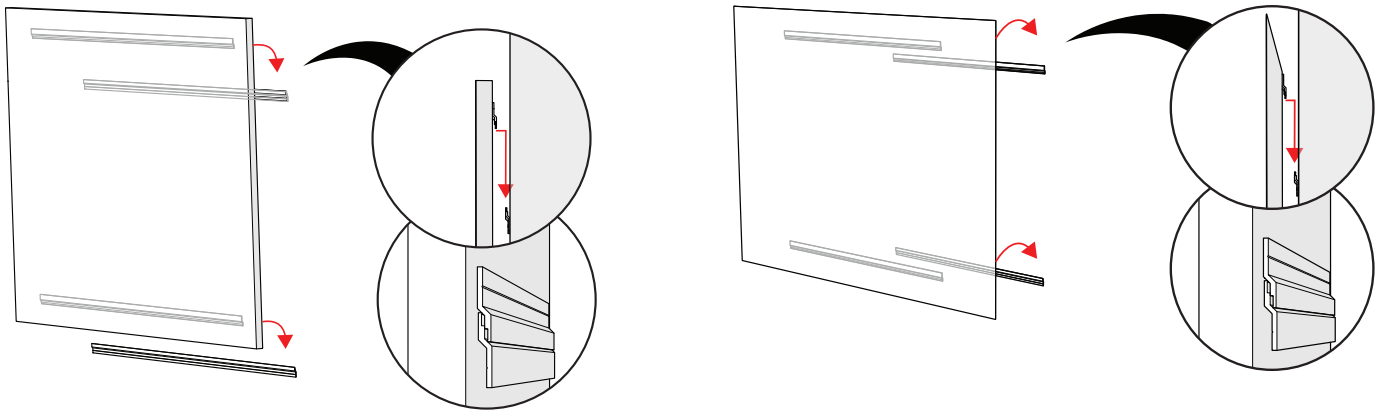
1/2" Stele      1" Stele      Stratus      5mm Hover      1" Integral

## SIZE OPTIONS

82x51						
48 x 48	60 x 48	72 x 48	77 x 48		96 x 48	120 x 48
48 x 36						

\* Custom sizes available upon request

## MOUNTING



Dimension Stele & Integral Cleat Mounting

Dimension Stratus Cleat Mounting



# **DIMENSION TABLESCREEN**

Dimension TableScreens create functional privacy without compromising design elements in open concept professional environments. The sleek, modern, frameless design beautifully complements any table. Easy to install and specify, Dimension TableScreens come in a variety of standard size and mounting options to complement practically any table design.







**DIMENSION  
TABLESCREEN**

Provide the ultimate privacy without compromising on design. Another original Dimension design, these TableScreens bring a modern look with a frameless, vanishing edge design. The frameless design complements any table, and can be secured with a variety of table agnostic mounting options. Offered in a number of standard and custom size options, Dimension TableScreens comes with all the professional grade features of EVS.



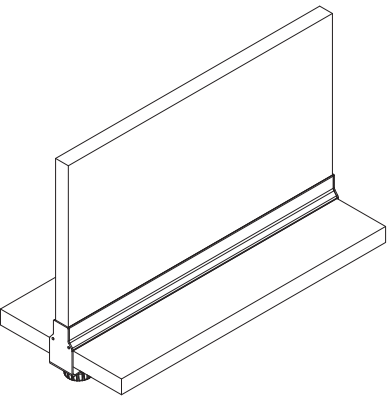
# DIMENSION TABLESCREEN

## SIZE OPTIONS

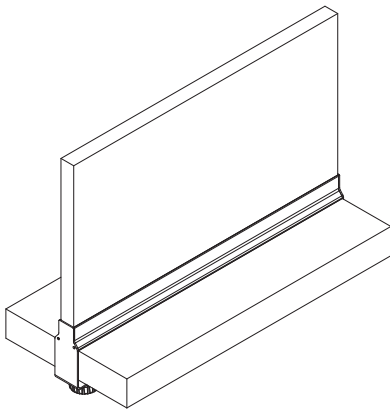
24 x 18	30 x 18	36 x 18	48 x 18	60 x 18	72 x 18
24 x 14	30 x 14	36 x 14	48 x 14	60 x 14	72 x 14
24 x 12	30 x 12	36 x 12	48 x 12	60 x 12	72 x 12

\* Custom sizes available upon request

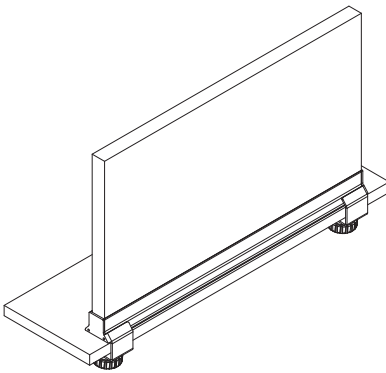
## MOUNTING OPTIONS



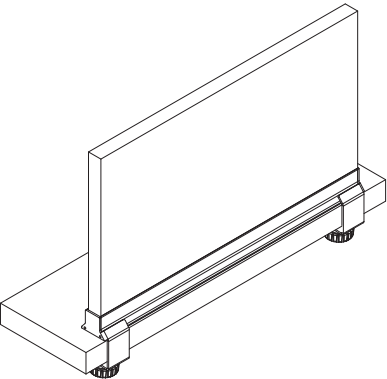
Cross Clamp C1



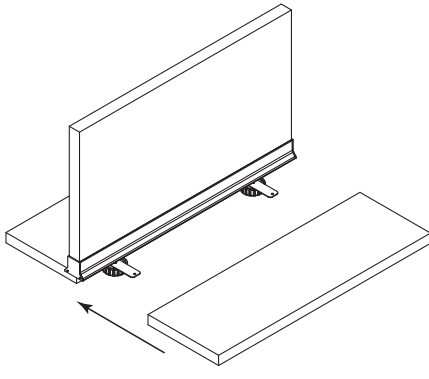
Cross Clamp C2



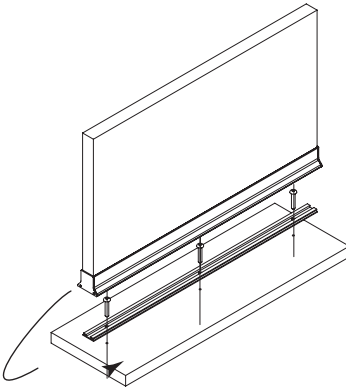
Edge Clamp E1



Edge Clamp E2



Joiner Mount



Surface Mount Base







We facilitate creativity, promote the sharing and capturing of ideas while seamlessly and beautifully complementing the existing workspace. We inspire the minds today, that will inspire the future. We are the blank canvas that gives life to the beginning of an idea.

We offer a wide range of well-designed, productivity enhanceing products that can be configured and sourced as either self-standing or integrated for a systematic solution that enhance and complement the people, the assets within the work space and provide a blank canvas for ideas to spark.