

EGAN

WALL SYSTEMS



WALL SYSTEMS

Egan Wall Systems is a high-performance modular system offering a complete range of options including cabinets, shelving, markerboards and tackboards. Wall System offers track components for optimum communication flexibility and simplicity all in one product line. The discreet linear track is wall mounted at 81" high. Wall System's track options allow you to configure and reconfigure the office landscape, so that you may maximum planning and flexibility to your working environment.

Egan Wall System include dry-erase EVS surface applications: VersaPRO Wallcovering, VersaJOT and VersaMAG. Versa products' magnetic or peel and stick solution of EVS means you can apply dry-erase surface to open wall and surface space.

Key Features:

- 5 unique track rail options
- Track mount markerboards, tackboards, shelving and cabinets
- Infill board options: EVS, porcelain, tackable fabric, and cork.
- 9 Etex and 8 Veneer Cabinet finish options
- 9 Etex Shelving finish options
- Custom board, cabinet and shelving size

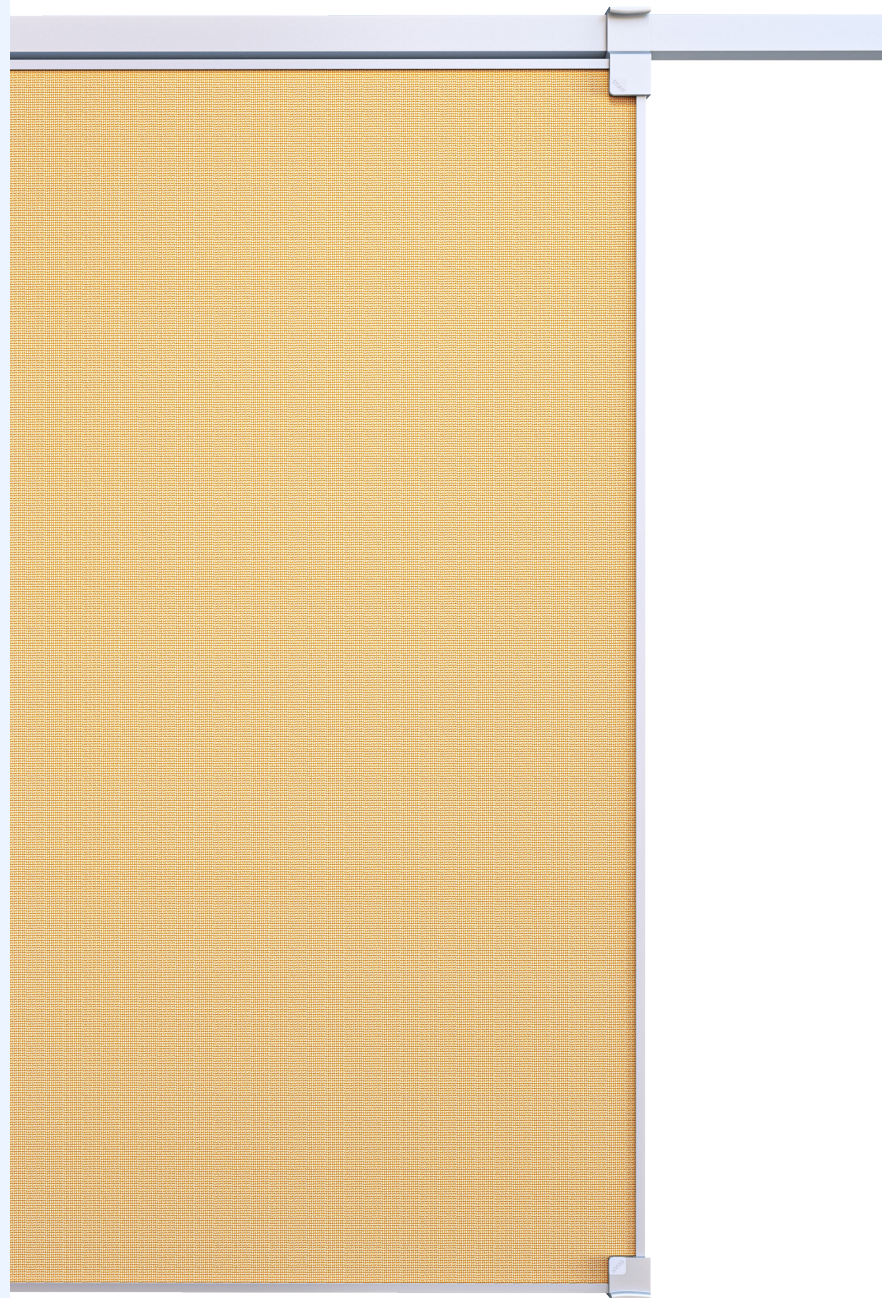




WALL SYSTEMS

Track-mounted markerboards and tackboards feature unique, adjustable corner mounts that slide on and off. This design permits boards to reconfigure easily and hang in any orientation. Frames are finished in sleek EganMetallic and come in a variety of infills: professional grade EVS, EganBoard Porcelain, natural cork, and tackable fabric in an assortment of neutral and colorful options. Mix and match different infills to create a diverse, functional board.

WALL SYSTEMS TRACK



PRODUCT OPTIONS



Cabinet & Shelves



Markerboards



Tackboards



A-framed Mobile

TRACK OPTIONS



Twin Track



Multi Track



Track with
Cork Infill



Flip chart holder

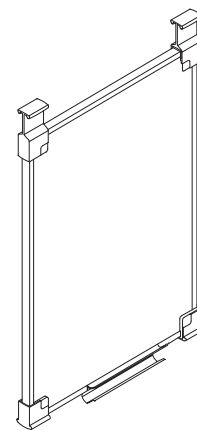


Single Track

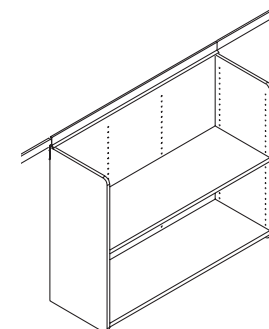
Max 10ft

Max 8ft

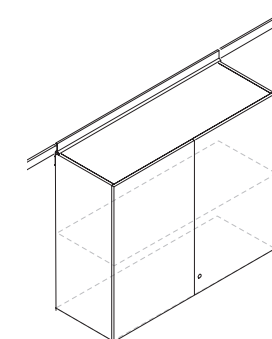
SIZE OPTIONS



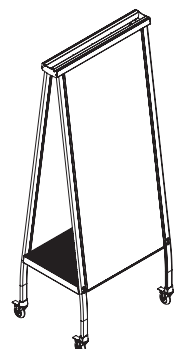
26" w x 36" h
36" w x 48" h



One shelf: 36-48" w x 16" h x 12 1/2" d
Two shelves: 36-48" w x 29" h x 12 1/2" d
Three shelves: 36-48" w x 43" h x 12 1/2" d



Two shelves:
36" w x 29" h x 12 1/2" d
Three shelves:
36" w x 43" h x 12 1/2" d



30-48" w x 74" h x 21" d

* Custom sizes available

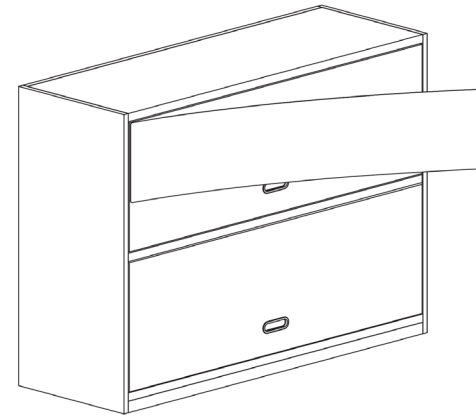


WALL SYSTEMS

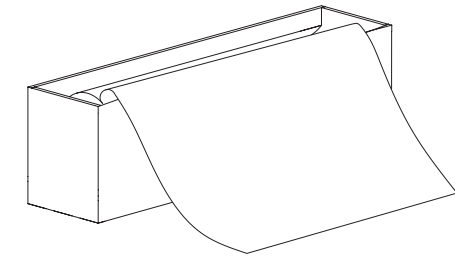
VersaJOT and VersaMAG are perfect applications for areas that require small, non permanent labeling and signage. VersaJOT is a peel and stick EVS surface that is available in smaller dimensions for personal usage. VersaMAG is EVS applied to a magnet. It installs magnetically on any metal surface, and is offered in popular sizes or as custom shape. VersaMAG is ideal for smaller locations where a metal surface can be upgraded for dry-erase use. EganINK adds branding and increases functionality.

WALL SYSTEMS VERSA

PRODUCT OPTIONS



VersaMAG & Versa Jot



VersaPro

SIZE
OPTIONS

	24 x 18	30 x 18	36 x 18	42 x 18
	24 x 15	30 x 15	36 x 15	42 x 15

* Custom sizes available

VersaJot and VersaMAG

1-400" w x 54"h
1-400" w x 46"h

* Custom sizes available

VersaPro



We facilitate creativity, promote the sharing and capturing of ideas while seamlessly and beautifully complementing the existing workspace. We inspire the minds today, that will inspire the future. We are the blank canvas that gives life to the beginning of an idea.

We offer a wide range of well-designed, productivity enhanceing products that can be configured and sourced as either self-standing or integrated for a systematic solution that enhance and complement the people, the assets within the work space and provide a blank canvas for ideas to spark.