

**EGAN**

BOARDS





# WHITE BOARDS

---

Designed and crafted using the highest quality materials. Egan Whiteboards feature 5 frame styles, multiple depths, Porcelain and or Egan's EVS surface. Egan Whiteboards are the perfect canvas for sharing your great idea.

## DESIGN FAMILIES

Egan Whiteboards come in the following design families



Architrave



Boxcore



Classic



Dimension  
\*Stratus shown







Dimension Stratus

# DIMENSION

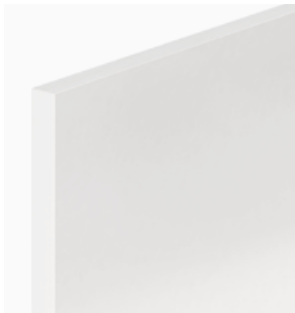
The evolution of the whiteboard. The frame-less deign combined with Egan's EVS surface form the most customizable and advanced whiteboard on the market.



Dimension Stele LINXX | Custom Size

# DIMENSION BOARDS

## BOARD OPTIONS



DM13 - 1/2" Stele



DM - 1" Stele



DMS - Stratus



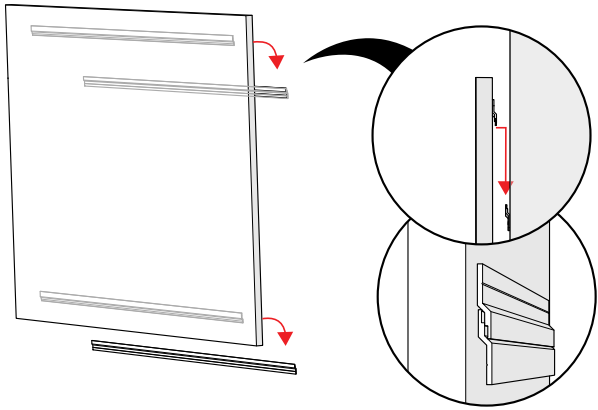
DMI - Integral

## SIZE OPTIONS

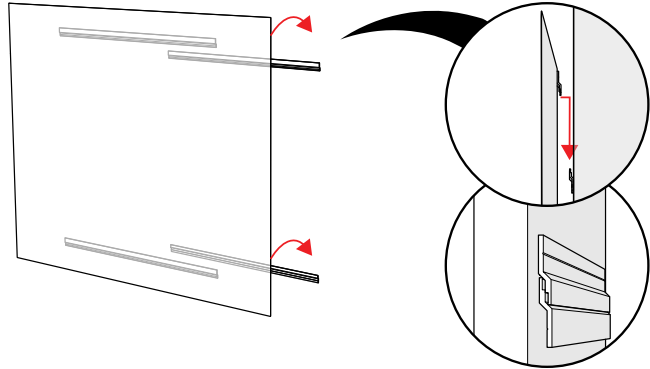
82x51						
48 x 48	60 x 48	72 x 48	77 x 48		96 x 48	120 x 48
48 x 36						

\* Custom sizes available upon request

## MOUNTING



Dimension Stele & Integral Cleat Mounting



Dimension Stratus Cleat Mounting





Architrave Markerboard EVS with Dark Oak Frame | 48" w x 60" h



Architrave Markerboard GlassWrite with Medium Oak Frame | 96" w x 48" h

## ARCHITRAVE

A modern low profile wood edge provides the frame to enclose multiple core materials including tack-able and dry-erase surfaces. Striking the balance between nature and function.



# ARCHITRAVE BOARDS



## INFILL OPTIONS



EVS



Glasswrite



EcoTack



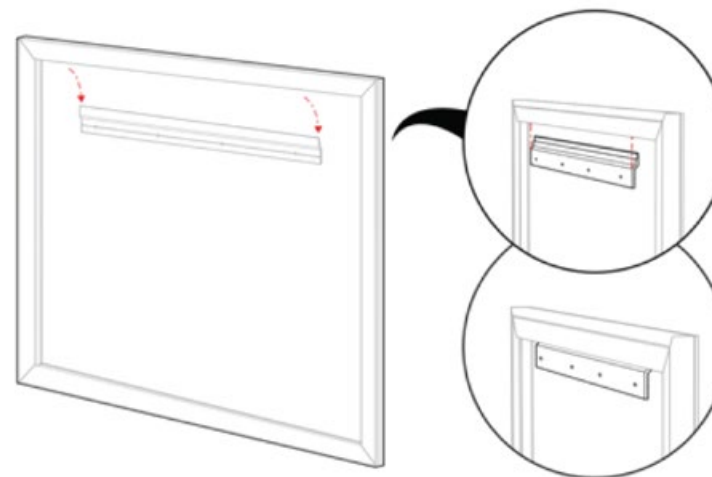
Fabric

## SIZE OPTIONS

	48 x 48	60 x 48	72 x 48	96 x 48
48 x 36				

\* Custom sizes available upon request

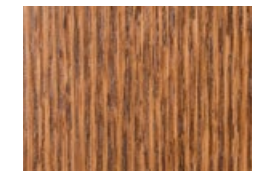
## MOUNTING



## STAIN OPTIONS



Black Oak



Dark Oak



Light Oak



Medium Oak

\*Custom stains available upon request





Boxcore board with EVS infill | 48" w x 48" h (also pictured Boxcore Mobile GlassWrite)

# BOXCORE

A stylish thin aluminum frame available in 19mm and 29mm depths provide the frame for tack-able and dry erase surfaces. Egan Boxcore design is available in wall-mounted, standing rigging, tablescreens, and mobiles



Boxcore board | GlassWrite printed with EganINK | 48" w x 48" h

# BOXCORE BOARDS

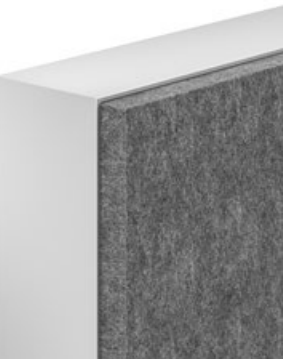
## INFILL OPTIONS



EVS



Glasswrite



EcoTack



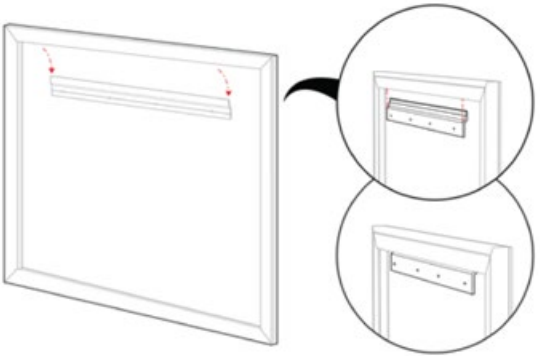
Fabric

## SIZE OPTIONS

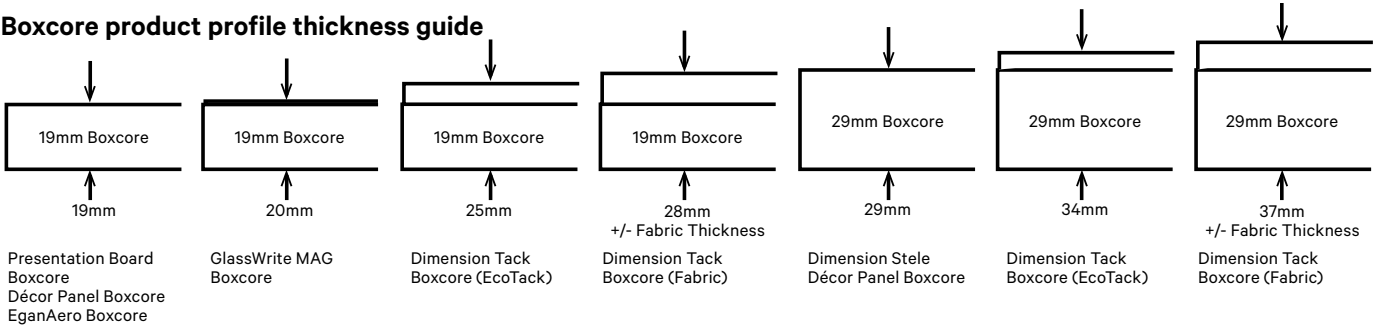
48 x 48	60 x 48	72 x 48	96 x 48	120 x 48
48 x 36				

\* Custom sizes available upon request

## MOUNTING

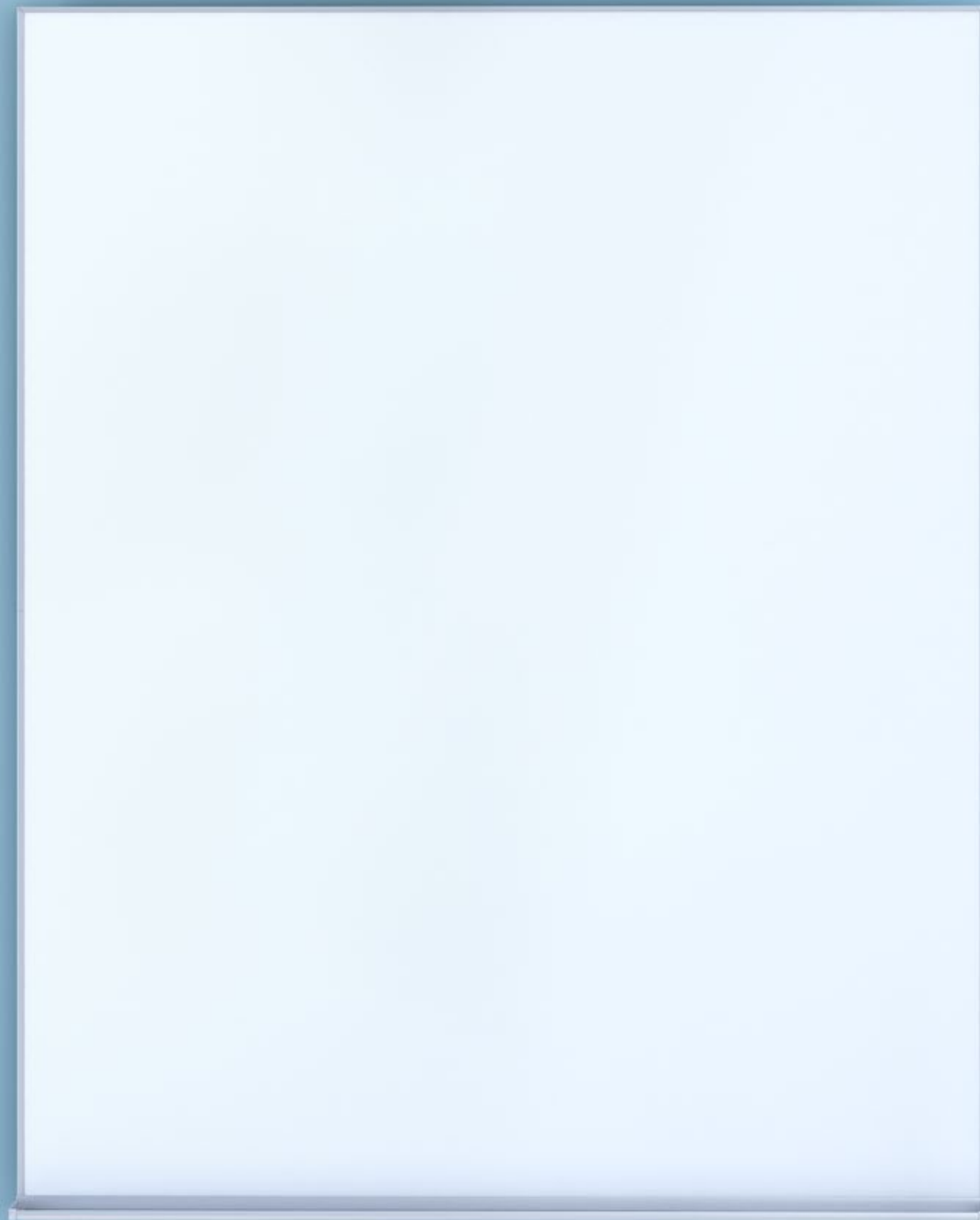


## PROFILE DEPTHS



From left to right, 19mm and 29mm profiles shown





Aluminum Frame Markerboard with Full Length Integrated Tray | EVS Infill | 48"w x 72"h



Linked Hardwood Frame | Light Oak Finish | EVS & Tackable Fabric Maharam, Manner Peel

## CLASSIC

A design that never goes out of style. Aluminum and hardwood frames enclose tack-able and dry-erase surfaces. Egan's EVS surface brings modern technology to this classic collection.

# CLASSIC BOARDS

## HARDWOOD INFILL OPTIONS



EVS



Porcelain



Cork



Fabric

## ALUMINUM INFILL OPTIONS



EVS



Porcelain



Cork



Fabric

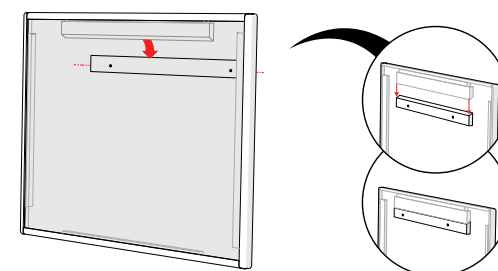
## HARDWOOD SIZE OPTIONS

48 x 48	60 x 48	72 x 48	96 x 48
48 x 36			

## ALUMINUM SIZE OPTIONS

48 x 48	60 x 48	72 x 48	96 x 48	120 x 48
24 x 36	48 x 36			

## MOUNTING





# GLASS BOARDS

---

Egan's GlassWrite and Aero collections set the standard for Glassboard functionality and style. Combined with EganINK and Egan's custom solution capabilities the possibilities are limitless.

## DESIGN FAMILIES

Egan marker boards come in the following design families



GlassWrite



Egan Aero







GlassWrite LINXX | Custom Color | 60"w x 48"h

## GLASSWRITE

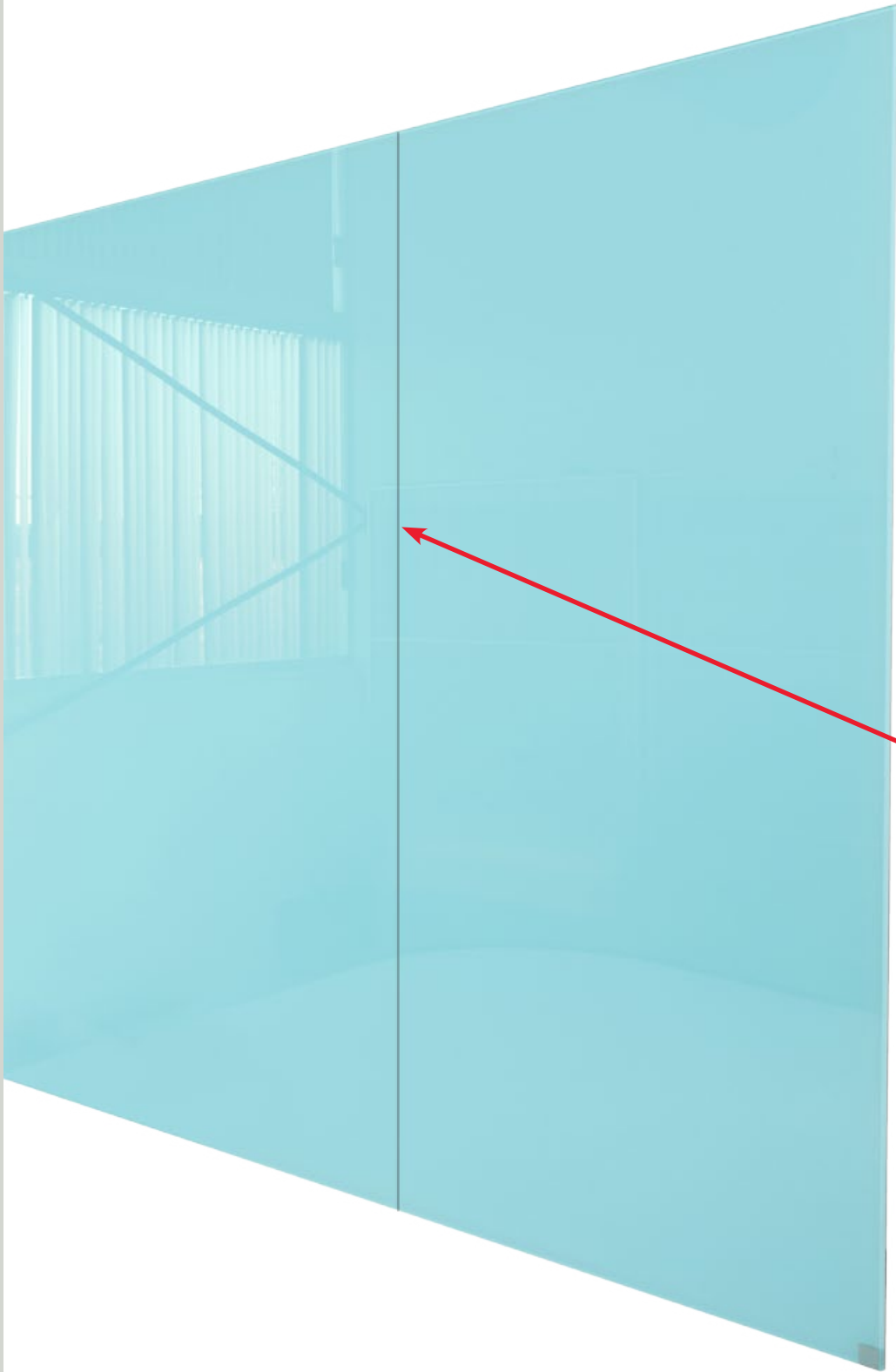
Ultra low-Iron glass boards provides the truest color representation possible.  
Boards can be linked to provide a continuous wall of glass.



GlassWrite LINXX | Custom Color | 60"w x 48"h



# GLASSWRITE BOARDS



## GLASS OPTIONS



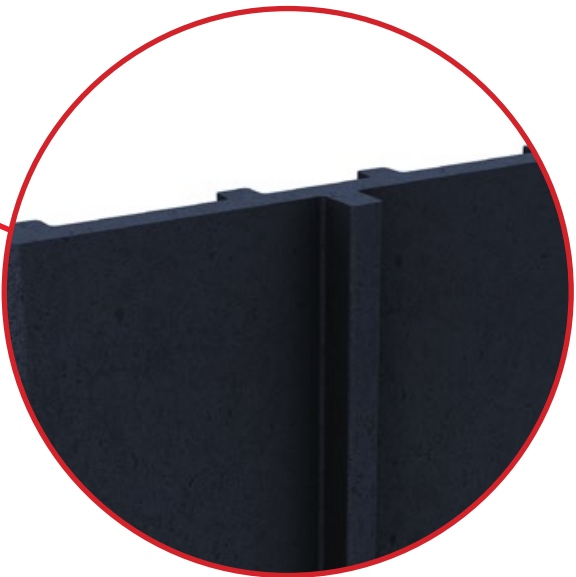
\*Specify any Pantone color for your glass boards. Clear and frosted also available.

## SIZE OPTIONS

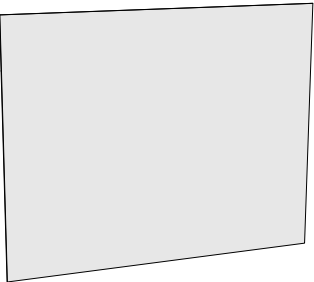
48 x 48	60 x 48	72 x 48	96 x 48	120 x 48
48 x 36				

\* Custom sizes available upon request

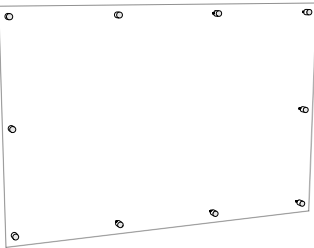
## MOUNTING OPTION



**Linxx Connection**  
Select a combination of GlassWrite boards to creates an industrious leading 1/4" seam your infinite length run using a vertical ABS black plastic extrusion.



**Cleat Mounted**  
\*only available for color and magnetic



**Stanchion Mounted**  
\*only available for clear, frosted and non-magnetic color



EganAero Hover | 96" w x 48" h



EganAero Hover | Color from Egan Palette | 96" w x 48" h

# EGANAERO

Ultra-thin high performance glass allows for Egan to create the most advanced glassboard on the market.



# EGANAERO BOARDS



## GLASS OPTIONS



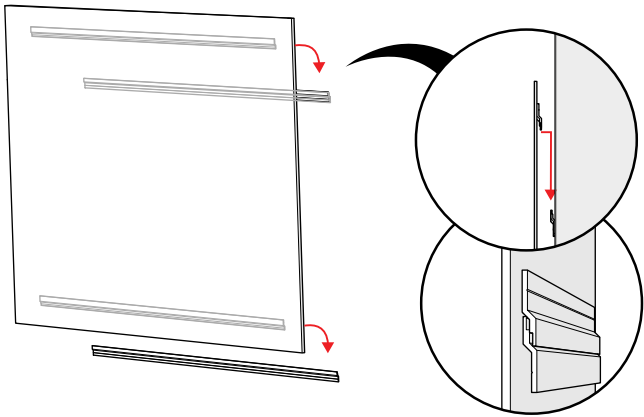
\*Specify any Pantone color for your Egan Aero board.

## SIZE OPTIONS

48 x 48	60 x 48	72 x 48	96 x 48
48 x 36			

\* Custom sizes available upon request

## MOUNTING OPTIONS



Cleat Mounted  
\*only available for color and magnetic



We facilitate creativity, promote the sharing and capturing of ideas while seamlessly and beautifully complementing the existing workspace. We inspire the minds today, that will inspire the future. We are the blank canvas that gives life to the beginning of an idea.

We offer a wide range of well-designed, productivity enhancing products that can be configured and sourced as either self-standing or integrated for a systematic solution that enhance and complement the people, the assets within the work space and provide a blank canvas for ideas to spark.