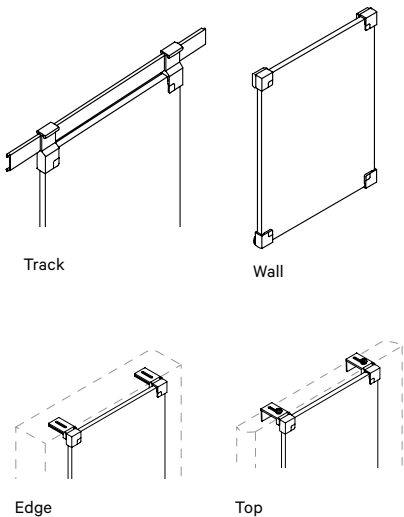
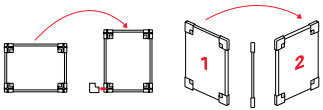


Lightweight: VersaBoard

The most effective and versatile whiteboard in the world. The EVS™ surface hangs portrait or switches to landscape in seconds, with mounting options to suit every need. Incredibly lightweight, weighing as little as 3 1/2 lbs. Egan VersaBoard is reversible, offering double the work surface - and guaranteed-to-clean!



1 Board				
Dimensions	Track Mount	Wall Mount	Edge Mount	Top Mount
26"w x 36"h	\$440	\$440	\$440	\$440
36"w x 48"h	\$730	\$730	\$730	\$730

3 Board Bundle - Save up to \$147/ Board				
Dimensions	Track Mount	Wall Mount	Edge Mount	Top Mount
26"w x 36"h	\$980	\$980	\$980	\$980
36"w x 48"h	\$1,750	\$1,750	\$1,750	\$1,750

5 Board Bundle - Save up to \$200/ Board				
Dimensions	Track Mount	Wall Mount	Edge Mount	Top Mount
26"w x 36"h	\$1,600	\$1,600	\$1,600	\$1,600
36"w x 48"h	\$2,640	\$2,640	\$2,640	\$2,640

* Track Corner Mounts are compatible with Egan Wall System boards

1. PRODUCT CODE	Code	Description
	EVB	Lightweight VersaBoard

2. MOUNT	Code	Description
	W	Wall Mount
	E	Edge Mount
	T	Track Mount
	PA	Top Mount - Narrow - 2"d to 3 3/16"d
	PB	Top Mount - Medium - 3 3/16"d to 4 7/16"d
	PC	Top Mount - Large - 4 7/16"d to 5 5/8"d

3. QUANTITY	Code	Description
	1	1 Board
	3	3 Board Bundle
	5	5 Board Bundle

HOW TO ORDER

EVB 36 48 PA 5 I

1. Product Code

Width

Height

2. Mount

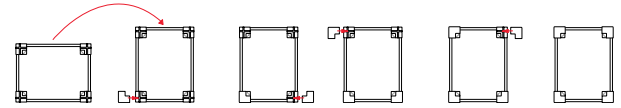
3. Qty

EganINK File supplied by Egan

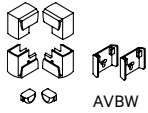
WHAT'S IN THE BOX	<p>Ships with specified mount</p> <p>For dry-erase surfaces, two (2) assorted color Dry-Erase Markers, and one (1) EganCloth</p>
-------------------	--

Lightweight: VersaBoard

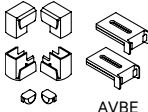
VersaBoard ships with mounts specified. For added functionality and versatility, optional mount kits are available below.



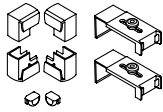
Additional VersaBoard Mount Kits



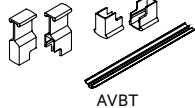
AVBW



AVBE



AVBP



AVBT

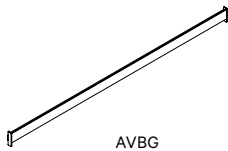
Track Mount	Dimensions	Description	Price
AVBT	N/A	Two Track corner mounts, two Track bumpers. Board not included. Compatible with Egan VersaBoards. Required for Glass (AVBG) and Magnetic Mount Kits (AVBM), wing bumper. Finished in EganMetallic (EM).	\$50

Wall Mount	Dimensions	Description	Price
AVBW	N/A	Two left and two right corner mounts, two rubber standoffs, two wall mount brackets. Restricted to 6 lb. max. weight load. VersaBoard not included. Finished in EganMetallic (EM).	\$50

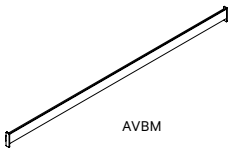
Edge Mount	Dimensions	Description	Price
AVBE	N/A	Two left and two right corner mounts, two rubber standoffs, two edge mount brackets. Restricted to 6 lb. max. weight load. VersaBoard not included. Finished in EganMetallic (EM).	\$50

Top Mount	Dimensions	Description	Price
AVBPA	2" to 3 3/16"	Two left and two right corner mounts, two rubber standoffs, two Top Mount assemblies. Specify size as per code. Restricted to 6 lb. max weight load. VersaBoard not included. Finished in EganMetallic (EM).	\$80
AVBPB	3 3/16" to 4 7/16"		\$80
AVBPC	4 7/16" to 5 5/8"		\$80

VersaBoard Track Kits (EVB)



AVBG



AVBM

For lightweight VersaBoards only. Not compatible with EganSystem or EganSystem Office.

Adhesive-backed EganMetallic (EM) SystemTrack designed to support lightweight VersaBoards on glass windows, walls, or any smooth surface that will not accommodate a fastener. VersaBoard not included. EganSystem 202 and EganSystem Office products are too heavy for this application. For this type of installation, VersaBoard must be specified with Track Mount (AVBT) corners.

Glass Mount	Dimension	Price
AVBG37	37" lengths	\$100
AVBG49	49" lengths	\$120

Magnetic backed 37" and 49" lengths of EganMetallic (EM) SystemTrack designed to support lightweight VersaBoards on metal-surfaced panel systems, partitions or file cabinets. VersaBoard not included. EVS and EganBoard Porcelain system boards are too heavy for this application. For this type of installation, VersaBoard must be specified with Track Mount (AVBT) corners.

Magnetic Mount	Dimension	Price
AVBM37	37" lengths	\$120
AVBM49	49" lengths	\$150

Note: These two unusual track options are designed for use with lightweight Track Mount VersaBoards ONLY and are restricted to a maximum 7 lb weight load. EganSystem 202 and EganSystem Office products are too heavy for this application